



Virtual Public Informational Meeting

Project No. 0171-0456

Installation of Centerline Rumble Strips on Route 534

Join us for a Question & Answer Session following the formal presentation & send a question or comment during the session via:

E-Mail: DOTProject171-456Bolton@ct.gov

Phone: (860) 944-1111

Chat: Teams Live Event Chat

Project Webpage: portal.ct.gov/DOTBolton171-456

A recording of the formal presentation will be posted to YouTube after the live event. Closed captioning, including non-English translation options, will be available at that time.

Town of Bolton

Tuesday, June 15, 2021

7:00 PM





Virtual Public Informational Meeting

Project No. 0171-0456

Installation of Centerline Rumble Strips on Route 534

Join us for a Question & Answer Session following the formal presentation & send a question or comment during the session via:

E-Mail: DOTProject171-456Bolton@ct.gov

Phone: (860) 944-1111

Chat: Teams Live Event Chat

Project Webpage: portal.ct.gov/DOTBolton171-456

A recording of the formal presentation will be posted to YouTube after the live event. Closed captioning, including non-English translation options, will be available at that time.

Town of Bolton

Tuesday, June 15, 2021

7:00 PM



Installation of Centerline Rumble Strips on Route 534

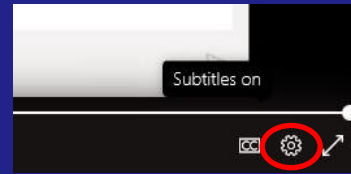
State Project No. 0171-0456
Bolton, CT

Captions / Subtitles (MS Teams only)

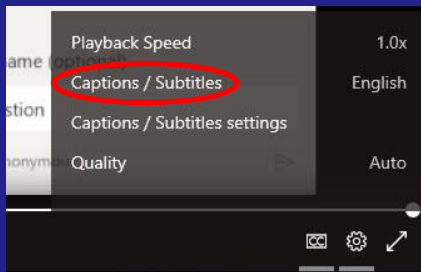
1) Select "CC" at bottom right



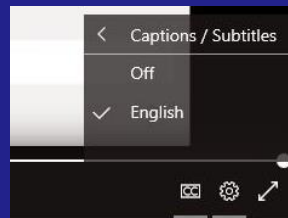
2) Select Settings wheel



3) Select "Captions / Subtitles"



4) Select desired language



Available Languages:

- English
- Spanish



Virtual Public Information Meeting Overview

Join us for a **Question & Answer Session** following the formal presentation & send a question or comment via:



Email: DOTProject171-456Bolton@ct.gov



Telephone: (860) 944-1111



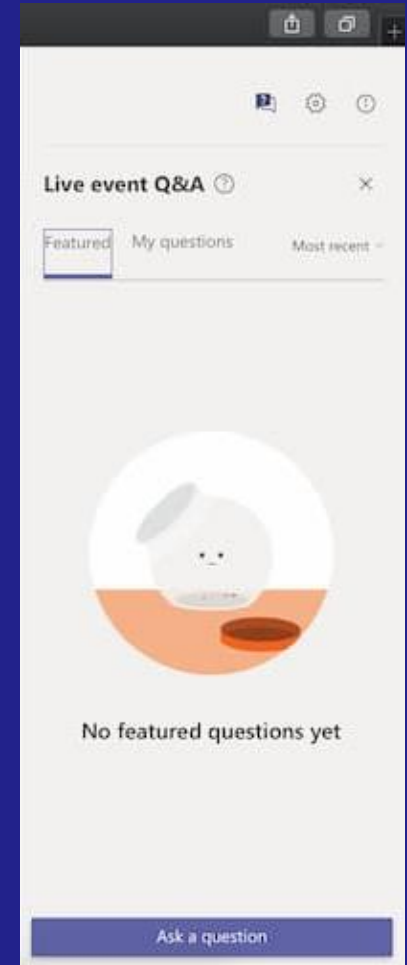
Chat: Teams Live Event Chat

Moderator will post Questions to the Microsoft Teams Live Q&A Window under 'Featured' Tab

Project Webpage:

portal.ct.gov/DOTBolton171-456

A recording of the formal presentation will be posted to YouTube after the live event. Closed captioning, including non-English translation options, will be available at that time.



Title VI - Civil Rights

- Feedback Survey appreciated.

<https://www.surveymonkey.com/r/BMBJS92>

- Civil Rights flyer available.

<https://portal.ct.gov/DOT/Business/Contract-Compliance/Civil-Rights-and-Accessibility>

- No Person shall, on the basis of race, color or national origin, be excluded from participation or subject to discrimination in the development of this project.



Project Representatives

Joseph P. Ouellette, RSP
State Safety Engineer
Project Manager



Balazs G. Martai, P.E.
Project Engineer/Presenter

Abdou-rahmane Camara
Transportation Engineer/Presenter



Ryan J. Pothering, P.E.
Transportation Engineer/Moderator

Devyn N. Howe
Transportation Engineer/Moderator



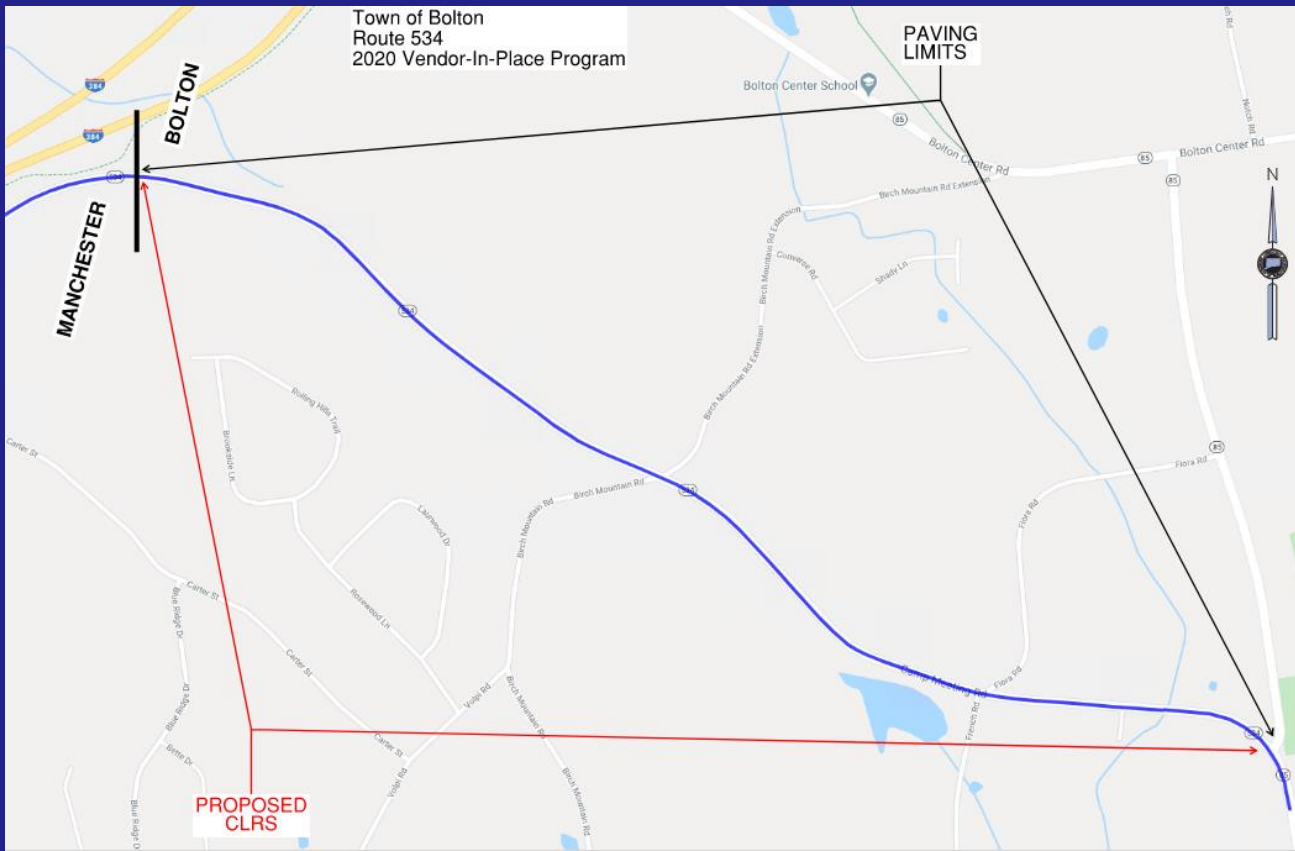
Agenda

- **Project Description**
- **What are Centerline Rumble Strips (CLRS)**
- **Why Use CLRS**
- **Crashes Affected by CLRS**
- **Use of CLRS**
- **Criteria for Eligibility**
- **Cost and Schedule**
- **Q & A Discussion**

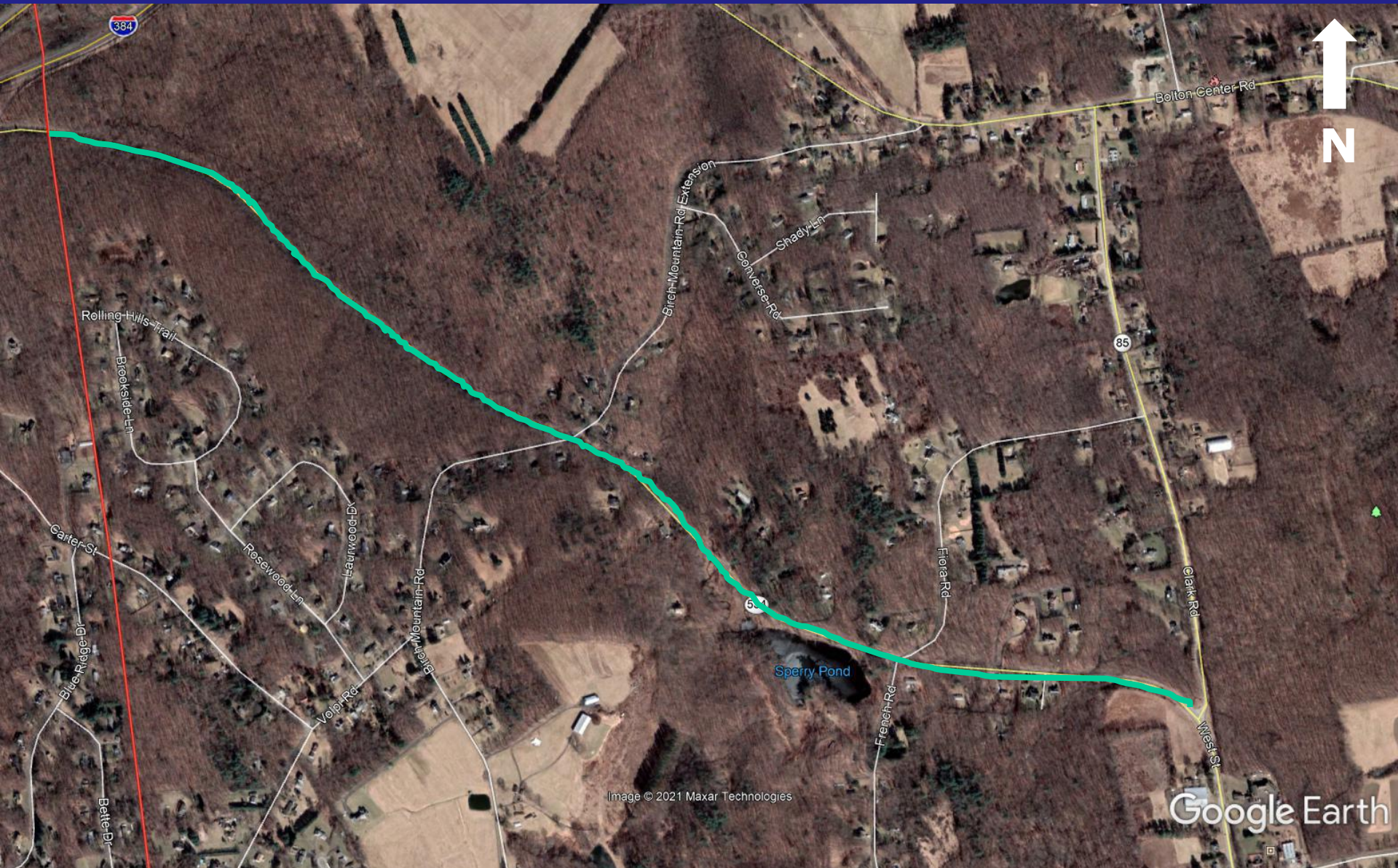


Project Description

CTDOT repaved Route 534 (Camp Meeting Road) from the Manchester Town line to Route 85 (West Street) during the 2020 Construction Season. This entire 1.64-mile section of Route 534 was identified as being a candidate for the installation of centerline rumble strips (CLRS).



Bolton - Route 534 (Camp Meeting Road)



What are Centerline Rumble Strips?

Grooved patterns installed at the center of the road intended to alert distracted, drowsy or inattentive drivers (through vibration and sound) that they have crossed the centerline.



Why Centerline Rumble Strips?

- **The audible and vibratory warning greatly improves the chances of a quick and safe return to their lane.**
- **Pavement markings are often obscured during inclement weather. The vibration provided by the CLRS assist drivers from unintentionally crossing the centerline during these conditions.**
- **CLRS are a proven, low-cost safety improvement.**



Select any of the following icons to learn more about the specific countermeasure



[Roadside Design Improvement at Curves](#)



[Reduced Left-Turn Conflict Intersections](#)



[Systemic Application of Multiple Low Cost Countermeasures at Stop-Controlled Intersections](#)



[Leading Pedestrian Interval](#)



[Local Road Safety Plan](#)



[USLIMITS2](#)



[Enhanced Delineation and Friction for Horizontal Curves](#)



[Longitudinal Rumble Strips and Stripes on Two-Lane Roads](#)



[Median Barrier](#)



[Safety Edge_{SM}](#)



[Backplates with Retroreflective Borders](#)



[Corridor Access Management](#)



[Dedicated Left- and Right-Turn Lanes at Intersections](#)



[Roundabouts](#)



[Yellow Change Intervals](#)



[Medians and Pedestrian Crossing Islands in Urban and Suburban Areas](#)



[Pedestrian Hybrid Beacon](#)



[Road Diet](#)



[Walkways](#)



[Road Safety Audit](#)

Link to information about CLRS on CTDOT's Safety Engineering Page

[CLICK HERE](#)



Crashes Affected by CLRS

- In 2020, there were 36 fatalities and 2,340 injuries from head-on and opposite direction sideswipe crashes on CT roadways (non-freeway).
- CLRS help reduce these type of crashes, which could be attributed to distracted or fatigued driving.
- Over one in four of the persons injured in crashes associated with vehicles crossing the centerline were under the age of 25.



Crashes Affected by CLRS

- In latest 3-year crash period, there were 4 crashes where the driver crossed centerline
- Fatal and injury head-on and sideswipe crashes in rural areas reduced by an average of 44%

Reductions up to:



50%
HEAD-ON
CRASHES



46%
RUN-OFF-ROAD
CRASHES



51%
FATAL
CRASHES



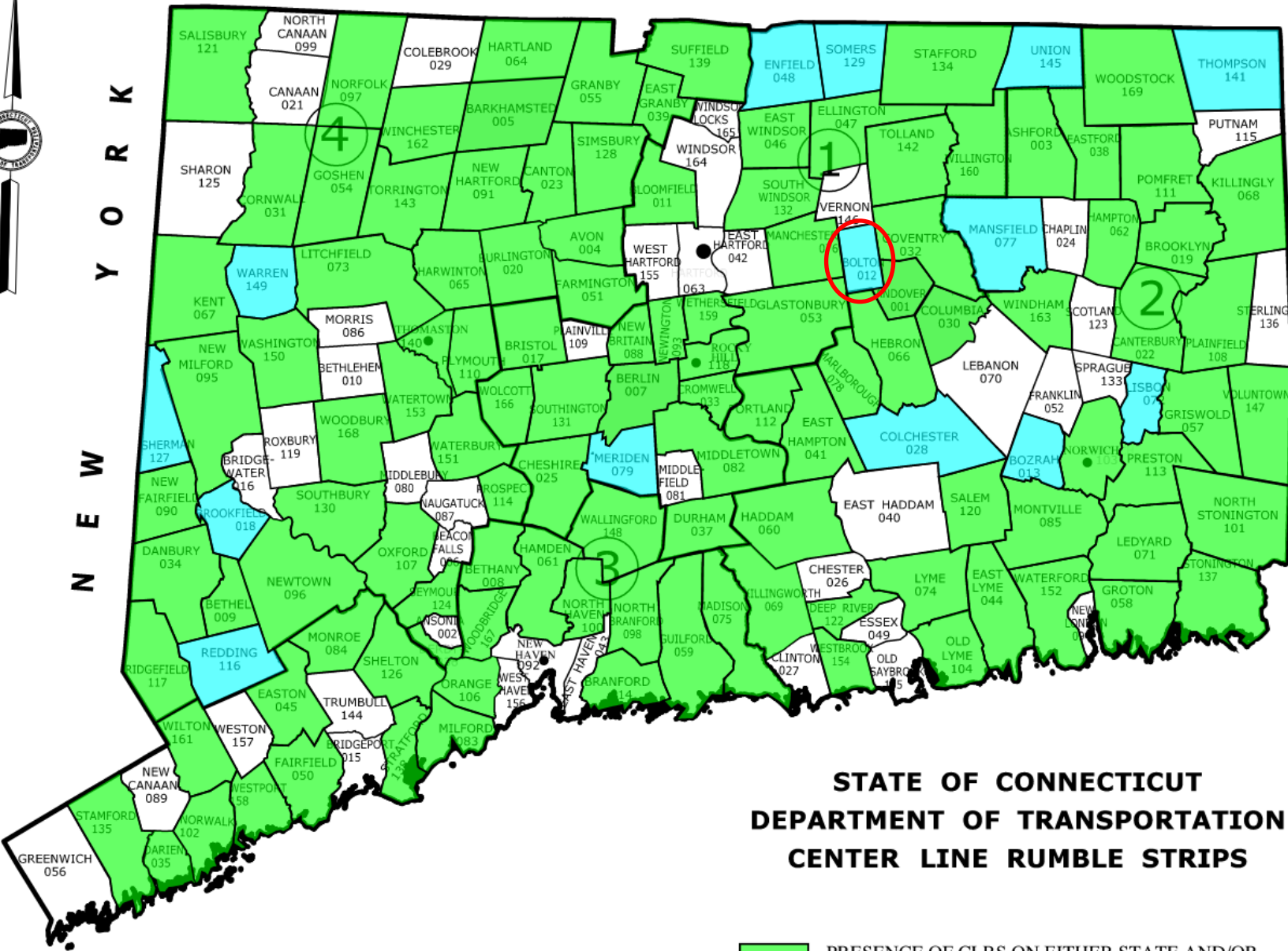
41%
SERIOUS
INJURY CRASHES



Use of Centerline Rumble Strips

- **CLRS are being used in 43 States across the country including MA, NY, NH, VT, ME, and RI to improve safety.**
- **CT has been installing centerline rumble strips on state and local roads since 2014.**
- **As of March 2021, Connecticut has installed over 1,650 miles of CLRS on the State system, and over 230 miles of CLRS on local roads.**





**STATE OF CONNECTICUT
DEPARTMENT OF TRANSPORTATION
CENTER LINE RUMBLE STRIPS**

- PRESENCE OF CLRS ON EITHER STATE AND/OR TOWN OWNED/MAINTAINED ROADWAY
- PROGRAMMED FOR CLRS
- NO CLRS PROGRAMMED TO DATE



Criteria for CLRS Eligibility

- **Roadways that have at least 2,000 vehicles/day**
- **Roadways where the pavement is in good condition and is less than 3 years old**
- **Roadways that are at least 14 feet wide from centerline to edge of pavement**
- **Roadways that have a speed limit of 35 mph or greater**
- **Low residential density with residences typically 100 feet or more from road**



CLRS under Construction

\$2.00 per foot for CLRS

\$1.20 per foot for Centerline Paint

Total cost is approximately \$27,500

100% State Funds

Construction in Summer/Fall 2021



Question and Answer Session



E-Mail: DOTProject171-456Bolton@ct.gov

Phone: (860) 944-1111

Chat: Teams Live Event Chat

Feedback Survey: <https://www.surveymonkey.com/r/BMBJS92>

Project Webpage: portal.ct.gov/DOTBolton171-456

Question and Answer Session



E-Mail: DOTProject171-456Bolton@ct.gov

Phone: (860) 944-1111

Chat: Teams Live Event Chat

Feedback Survey: <https://www.surveymonkey.com/r/BMBJS92>

Project Webpage: portal.ct.gov/DOTBolton171-456