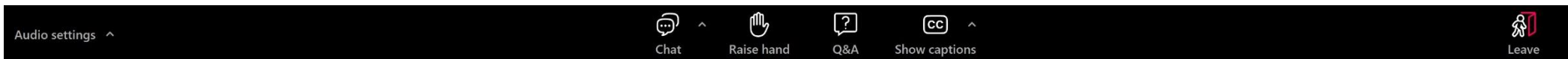


I-95 Greenwich Planning & Environment Linkages Study

Public Information Meeting | *November 20, 2024*



Virtual Engagement Features

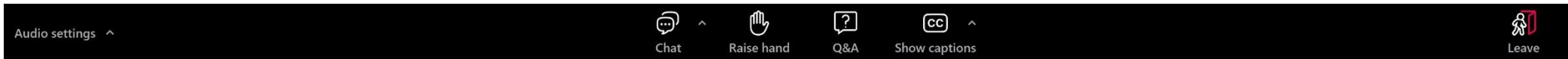


To call into the meeting: (309) 205-3325
Webinar ID: 847 1444 9908 | Passcode: 993247



Having technical issues? Email us at info@i95Greenwich.com
or call/text at [203-806-0804](tel:203-806-0804).

How to View Captions & Subtitles in Zoom

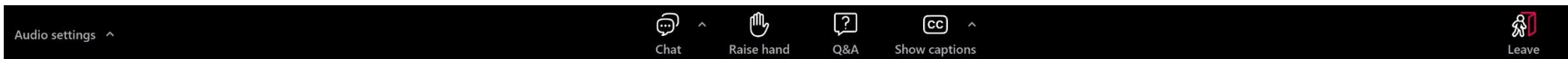


Click to view live captions/subtitles. You may choose the language of the captions.

Haga clic para ver los subtítulos en vivo. Puede elegir el idioma de los subtítulos.

Klike pou wè soutitraj yo. Ou gen dwa chwazi lang soutitraj yo.

How to Use Zoom Q&A



Discussion will follow the presentation. Raise your hand to speak.



Select the Q&A tool at the bottom to submit a question at any point. We will answer questions at the end.

Title VI – Your Civil Rights

No person shall, on the basis of race, color, or national origin, be excluded from participation or subject to discrimination in the development of this project.



Civil Rights Information

<https://portal.ct.gov/DOT/Business/Office-of-Equity/Title-VI-Page>



Voluntary Post-Meeting Survey

<https://portal.ct.gov/ctdotsurvey>

A recording of this presentation will be posted to CTDOT's YouTube channel after the event.

Closed captioning—including non-English translation options—are available on Zoom and YouTube.



Connecticut Department of Transportation

Title VI Notice to the Public

Individuals and organizations may file a complaint by completing the Title VI complaint form

(<https://railroads.dot.gov/resource-center/title-vi-civil-rights-act-1964/title-vi-complaint-format>).

Complaints should be signed and include contact information and should be sent to: Office of Civil Rights Federal Railroad Administration 1200 New Jersey Avenue, SE ROA-10, Mail Stop 5 Washington, DC 20590

The Connecticut Department of Transportation (CTDOT) operates its programs and services without regard to race, color, and national origin in accordance with Title VI of the Civil Rights Act. Any person who believes she or he has been aggrieved by any unlawful discriminatory practice under Title VI may file a complaint with the CTDOT.

For more information on the CTDOT's civil rights program, and the procedures to file a complaint, contact the CTDOT Title VI Coordinator at (860) 594-2169, TRS 711; Debra.Goss@ct.gov; or visit our administrative office at 2800 Berlin Turnpike, Newington, CT 06131. For more information, visit www.ct.gov/dot.

A complainant may file a complaint directly with the Federal Transit Administration by filing a complaint with the FTA Office of Civil Rights, Attention: Title VI Program Coordinator, East Building, 5th Floor-TCR, 1200 New Jersey Ave., SE, Washington, DC 20590

A complainant may file a complaint directly with the Federal Highway Administration by filing a complaint with the FHWA Office of Civil Rights, Attention: Title VI Program Coordinator, 8th Floor E81-105, 1200 New Jersey Ave., SE, Washington, DE 20590

如需更多信息或免费语言协助，请致电 (860) 594-2109

Para información adicional, o asistencia lingüística gratuita, por favor llame al (860) 594-2109

Per informazioni aggiuntive o assistenza linguistica gratuita, chiamare il numero (860) 594-2109

Para obter mais informações, ou para auxílio gratuito em outro idioma, ligue para (860) 594-2109

Aby uzyskać dodatkowe informacje lub bezpłatną pomoc tłumacza, proszę dzwonić pod numer (860) 594-2109

Для получения подробной информации или бесплатных услуг перевода звоните по телефону (860) 594-2109

Pou jwenn plis enfòmasyon, oswa asistans ak lang gratis, ranpri rele (860) 594-2109

لمزيد من المعلومات أو للحصول على مساعدة لغوية مجانية، يرجى الاتصال بالرقم (860) 594-2109

Si vous souhaitez en savoir plus ou bénéficier d'une assistance linguistique gratuite, merci de composer le numéro suivant (860) 594-2109

अधिक जानकारी या निःशुल्क भाषा संबंधी सहायता के लिए कृपया (860) 594-2109 पर कॉल करें।

추가 정보가 필요하거나 무료 언어 지원이 필요하시면 (860) 594-2109로 전화하십시오

Để có thêm thông tin hoặc hỗ trợ ngôn ngữ miễn phí, vui lòng gọi (860) 594-2109



November 30, 2024

Individuals and organizations may file a complaint by completing the Title VI complaint form (<https://railroads.dot.gov/resource-center/title-vi-civil-rights-act-1964/title-vi-complaint-format>).

Complaints should be signed and include contact information and should be sent to: Office of Civil Rights Federal Railroad Administration 1200 New Jersey Avenue, SE ROA-10, Mail Stop 5 Washington, DC 20590



November 30, 2024



Departamento de Transporte de Connecticut

Título VI Aviso al Público

- ◊ El Departamento de Transporte de Connecticut (CTDOT) se compromete a asegurar que ninguna persona sea excluida de participar en, o le sean negados los beneficios de, sus servicios de transporte basándose en la raza, color o país de origen de la persona protegida por el Título VI de la Ley de los Derechos Civiles. Si a usted le parece que ha sido objeto de discriminación en lo que corresponde al Título VI, puede presentar una queja al CTDOT.
- ◊ Para más información sobre el programa de derechos civiles del CTDOT y el proceso de presentar una queja, comuníquese con el Coordinadora del Título VI del CTDOT al teléfono (860) 594-2169, TRS 711; Debra.Goss@ct.gov. También puede visitar nuestra oficina administrativa en 2800 Berlin Turnpike, Newington, CT 06131. Para más información, visite www.ct.gov/dot.
- ◊ Un denunciante puede presentar una queja directamente ante la Federal Transit Administration si lo hace ante la FTA Office of Civil Rights, Attention: Title VI Program Coordinator, East Building, 5th Floor-TCR, 1200 New Jersey Ave., SE, Washington, DC 20590.
- ◊ Un denunciante podrá presentar una queja directamente ante la Federal Highway Administration si lo hace ante la FHWA Office of Civil Rights, Attention: Title VI Program Coordinator, 8th Floor E81-105, 1200 New Jersey Ave., SE, Washington, DC 20590.
- ◊ Para recibir más información o ayuda gratuita en otros idiomas, llame al (860) 594-2109.

Media Inquiries



CTDOT Office of Communications

CTDOTMedia@ct.gov

Let's have a productive, friendly, & efficient meeting.



Respectful
language &
professional
meeting
behavior



Manual
unmuting by
facilitator



Similar
questions may
be grouped



Recording
available
online



Welcome & Introductions

Meet the Study Leadership Team



Connecticut Department of Transportation

- Jonathan Dean, PE, Project Manager
- Joe Belrose, EIT, Project Engineer
- Neil Patel, PE, Principal Engineer
- Michael Calabrese, PE, Division Chief of Highway Design



CDM Smith

- Becca Hall, PE, Project Manager
- Krista Goodin, AICP, Deputy Project Manager
- Marian Hull, Public Outreach Lead



Meeting Speakers



Jonathan Dean
CTDOT
Project Manager



Marian Hull, AICP
Outreach Lead



Becca Hall, PE,
PTOE, RSP2I, PMP
Project Manager



Krista Goodin, AICP
Deputy Project
Manager

Meeting Purpose

We are looking for your feedback!



Explain Planning &
Environment Linkages Study
Process, Benefits & Outcomes



Present existing conditions
in the study area



Collect your feedback
on Draft Preliminary
Purpose & Need



Understand your
concerns & ideas

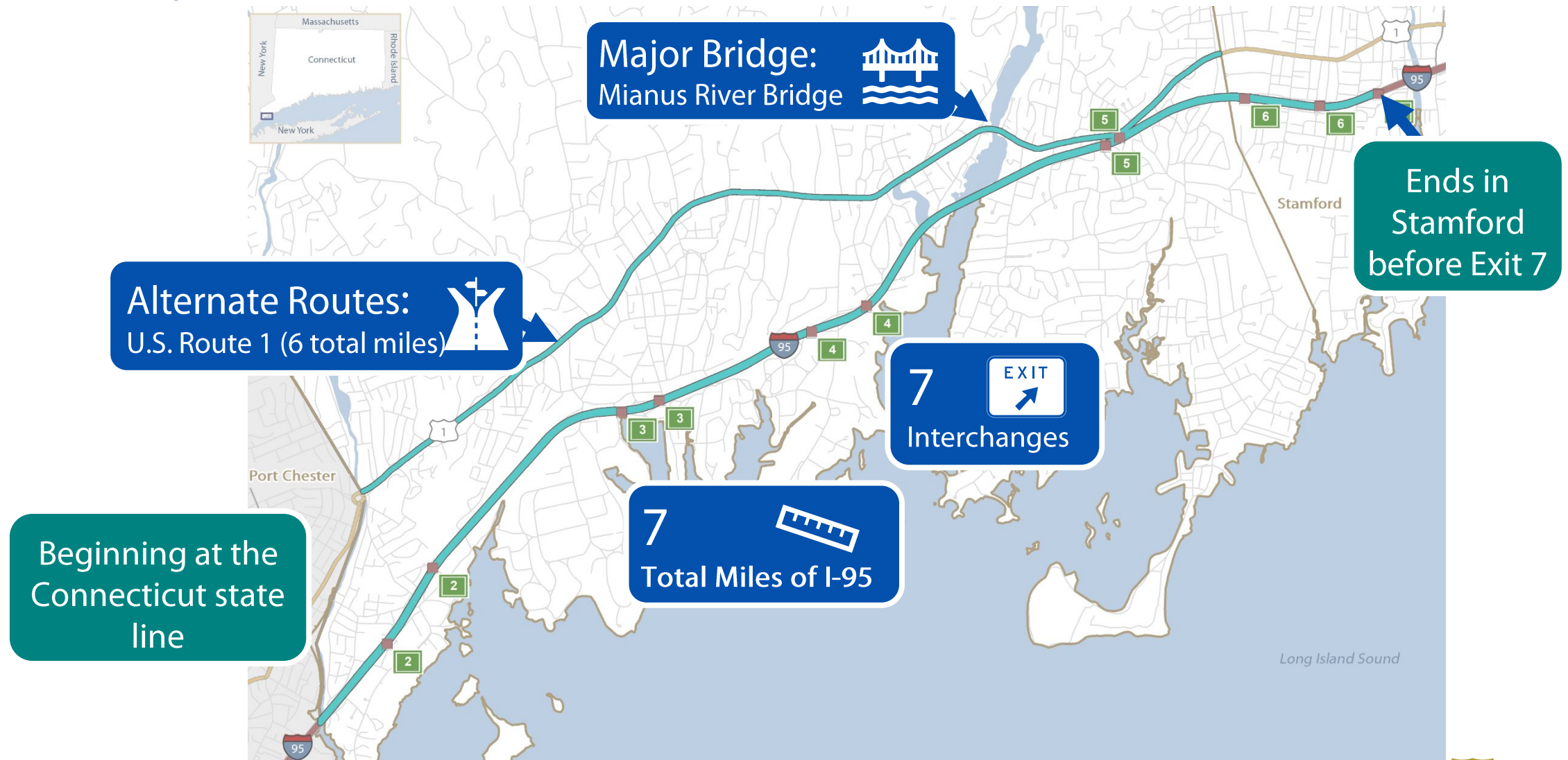
Presentation Agenda





I-95 Greenwich PEL Study Introduction

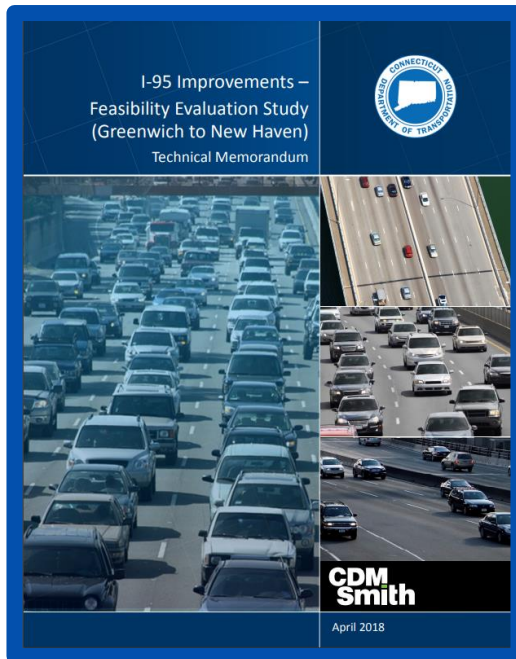
Study Area



Study Background

April 2018

I-95 Improvements –
Feasibility Evaluation Study,
Greenwich to New Haven



April 2019

Strategic Implementation
Plan I-95 West Corridor, NY
to New Haven



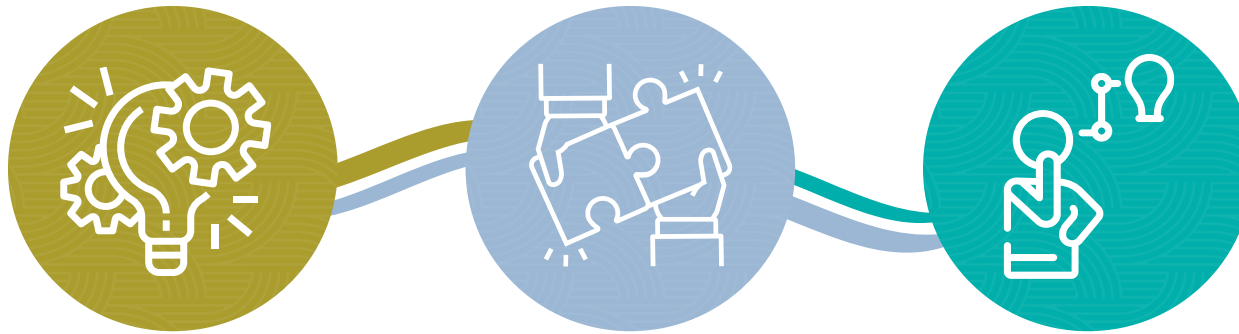
Next Step

PEL Study – Building a
framework for projects
moving forward



What is a PEL Study?

A Planning & Environment Linkages (PEL) study is a study that agencies use to make transportation investment decisions.



Creates efficiency in
transportation project
development

Collaborative &
integrated approach to
decision-making

Considers environment,
community &
economy

Who Participates?



Local, State & Federal Agencies; Resource Agencies; You!

Benefits of a PEL Study

Combines planning,
engineering, & National
Environmental Policy Act (NEPA)

Gives flexibility
to agencies

Encourages early, meaningful
public engagement

Promotes environmental
stewardship

Better informs
project selection

Reduces delays in
project development

Steps in a PEL Study Process

Identify
Transportation
Needs



Develop
Purpose &
Need



WE ARE
HERE

Develop
Screening
Criteria



Develop &
Screen
Concepts



Identify
Reasonable
Alternatives

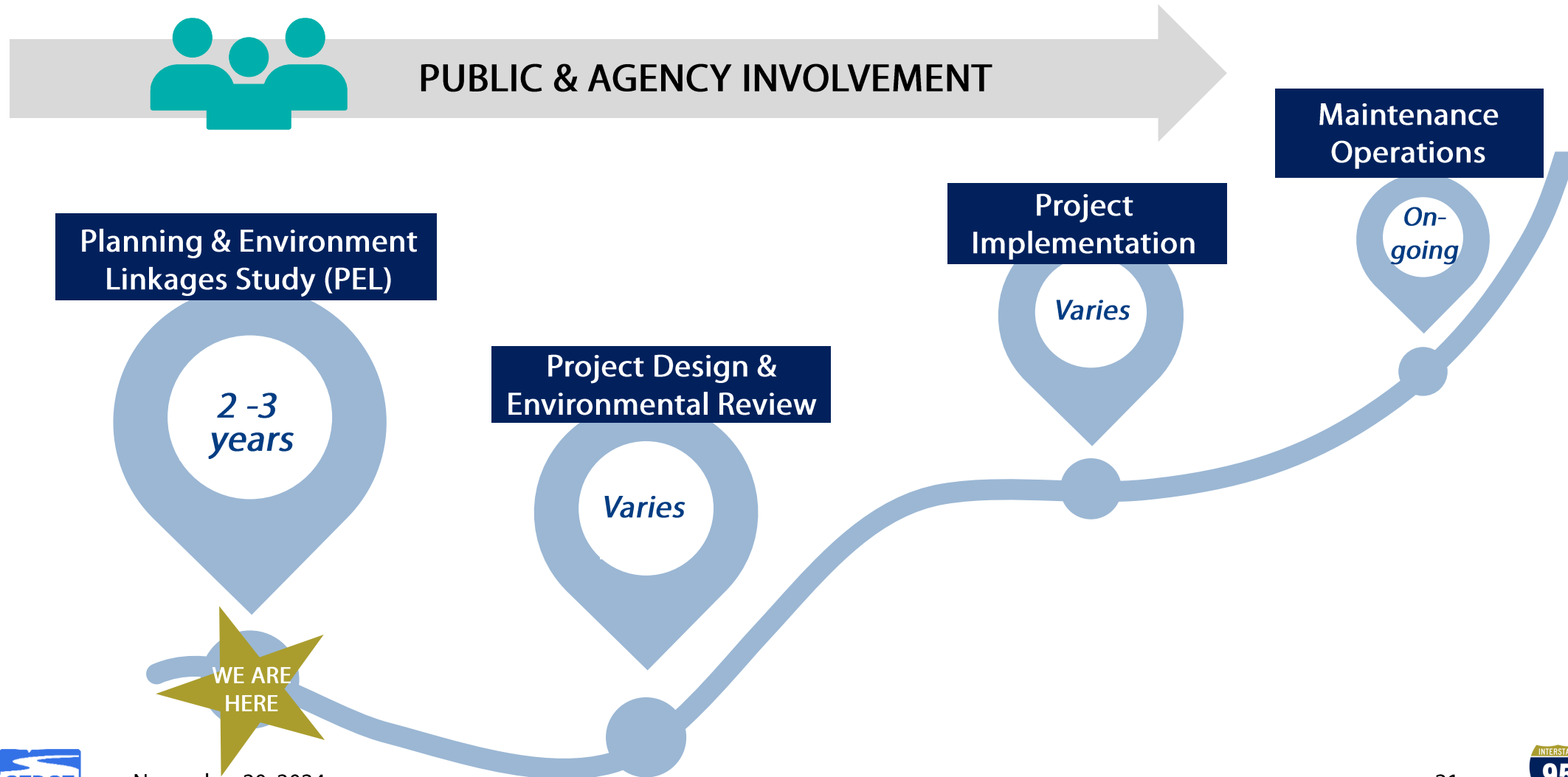


Draft,
Final
Study



Public & Stakeholder Engagement

How does a PEL study transition to projects?





Public Engagement


Focus on Engagement





Outreach Activities to Date

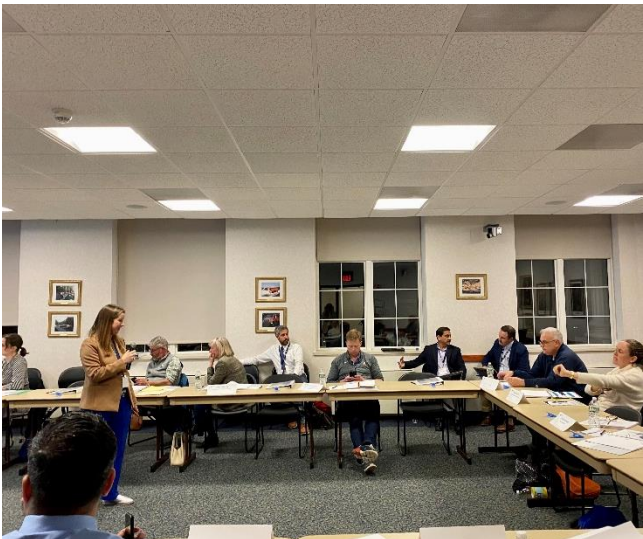
 13 Stakeholder Meetings

 3.5 Project Advisory Committee (PAC) Meetings

 750+ Community Members Attended

 10 Community-Based Organizations Reached

 9 Community Events



Project Advisory Committee (PAC)

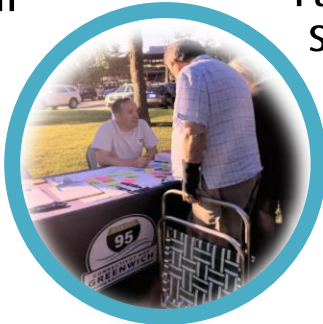
- AAA Northeast
- Barbara's House
- Byram Neighborhood Association
- City of Stamford
- Connecticut Commuter Rail Council
- Cos Cob/Loughlin Park NRZ
- East Coast Greenway Alliance
- Friends of Bruce Park
- Greenwich Chamber of Commerce
- Greenwich Coalition to Stop 95 Noise
- Greenwich Historical Society
- Greenwich Hospital
- Greenwich Land Trust
- Greenwich Preservation Trust
- Greenwich Public Schools
- Greenwich Tree Conservancy
- Greenwich United Way
- Jewish Family Centers of Greenwich
- Metro-North Railroad
- Milbrook Owner's Association
- Motor Transport Association of Connecticut
- Neighbor to Neighbor
- Neighborhood Citizens Against I-95 Noise
- Norwalk Transit
- Old Greenwich Association
- Person to Person
- Riverside Association
- Rockmere Association
- Town of Greenwich/Greenwich Emergency Medical Services (GEMS)
- Transportation Association of Greenwich
- West Side NRZ
- Western Connecticut Council of Governments

Pop-Up Events

**Bruce's
Birthday Bash**
April 9, 2024



**Greenwich
Parks & Recreation
Summer Concert
Series**
July 25, 2024



**Greenwich
Communities
Block Party**
August 3, 2024
Armstrong



**Health, Wellness, Lifestyle
Expo**
September 7, 2024
Harbor Point
(Stamford)



**Horizons at
Brunswick
Resource
Fair**
May 18, 2024



**Greenwich
Communities
Block Party**
July 27, 2024
Wilbur Peck



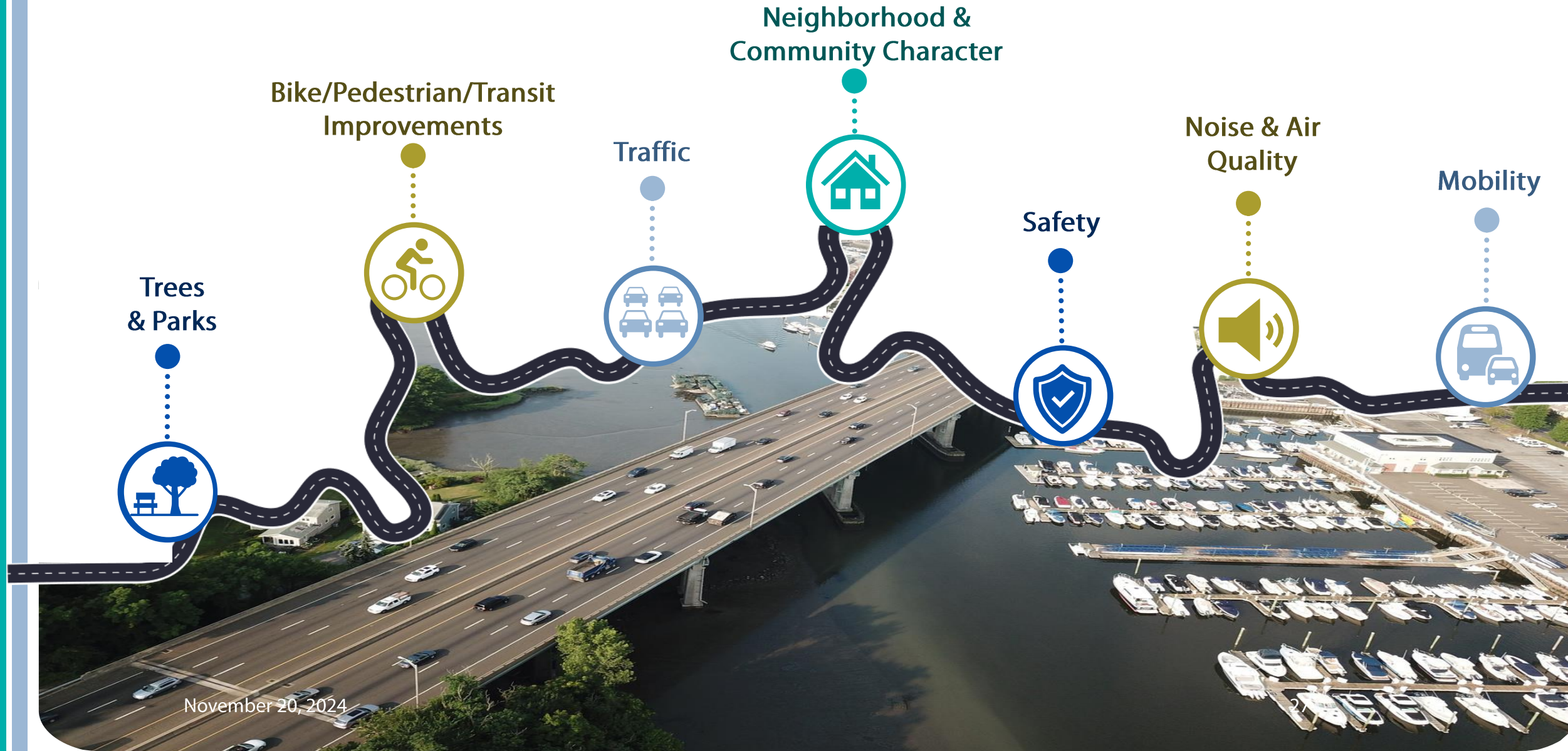
**Greenwich
Communities
Block Party**
August 10, 2024
Adams Garden



**Family Centers
Resource Fair**
October 3, 2024
Stamford Manor



What Have We Heard So Far?

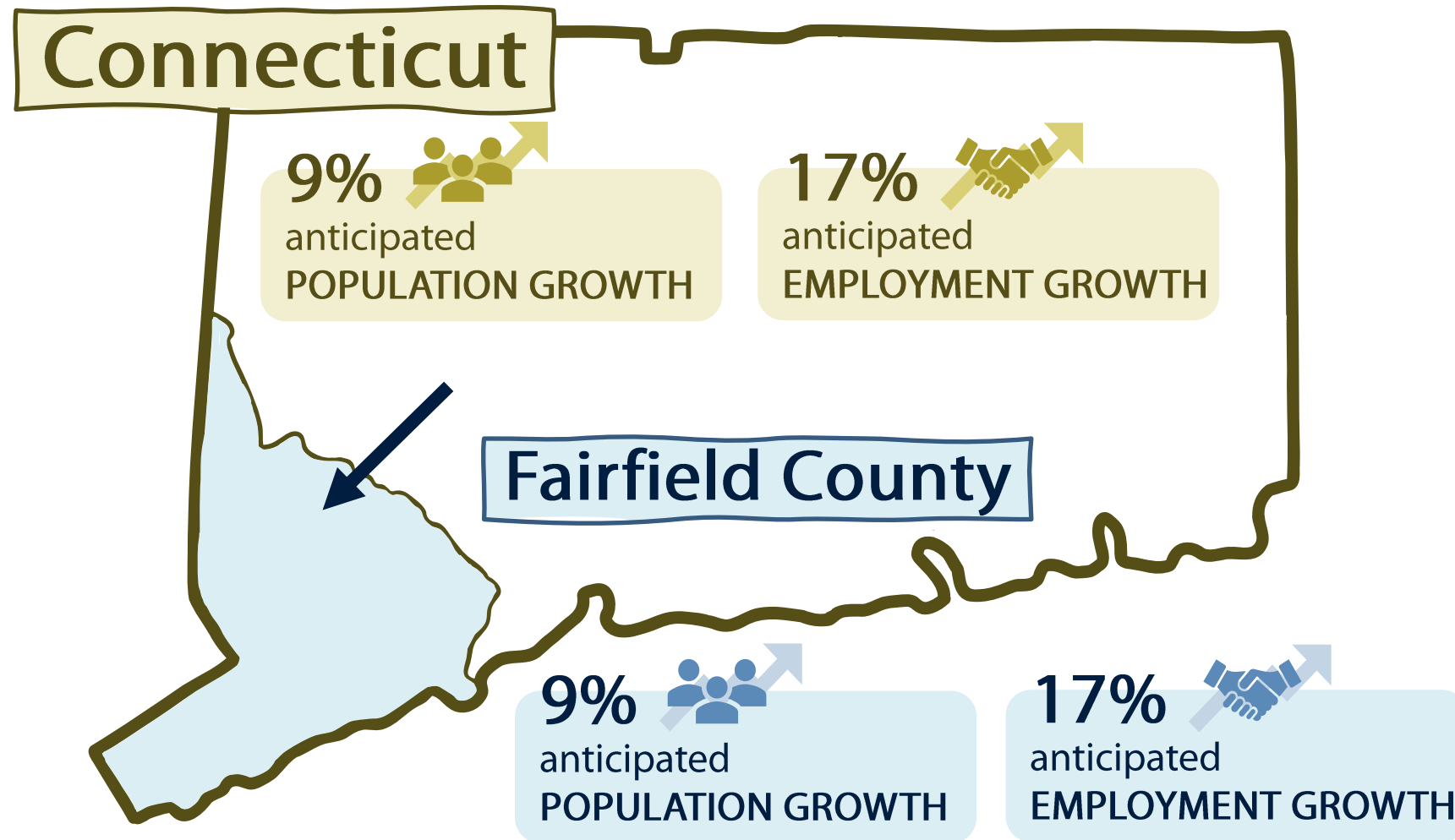


November 20, 2024



Existing Conditions in the Study Area

Regional Growth by 2050



Key Pieces of Analysis

Traffic

Design

Multimodal

Environmental



Traffic Conditions



Traffic Data Collection

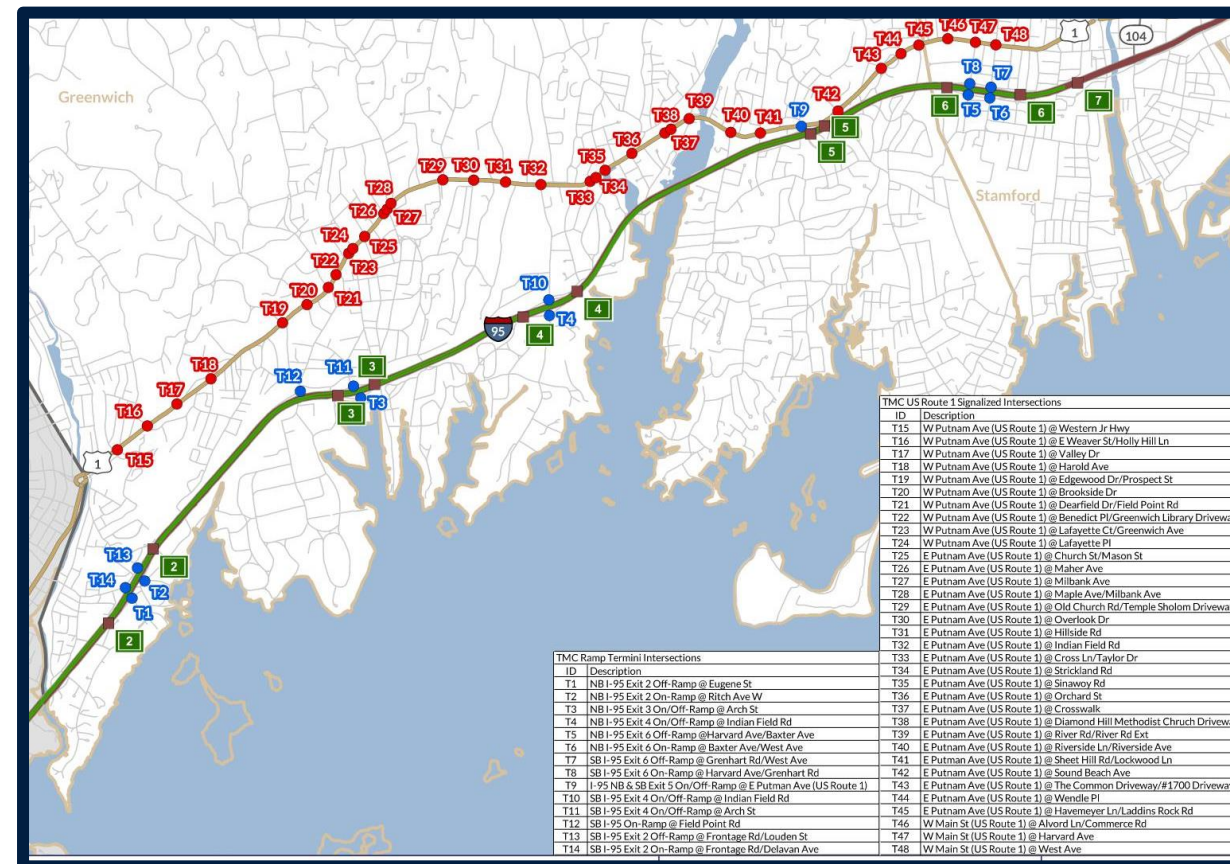
Counts collected

- Mainline
- 29 Ramps
- 48 Intersections



Vehicles per day

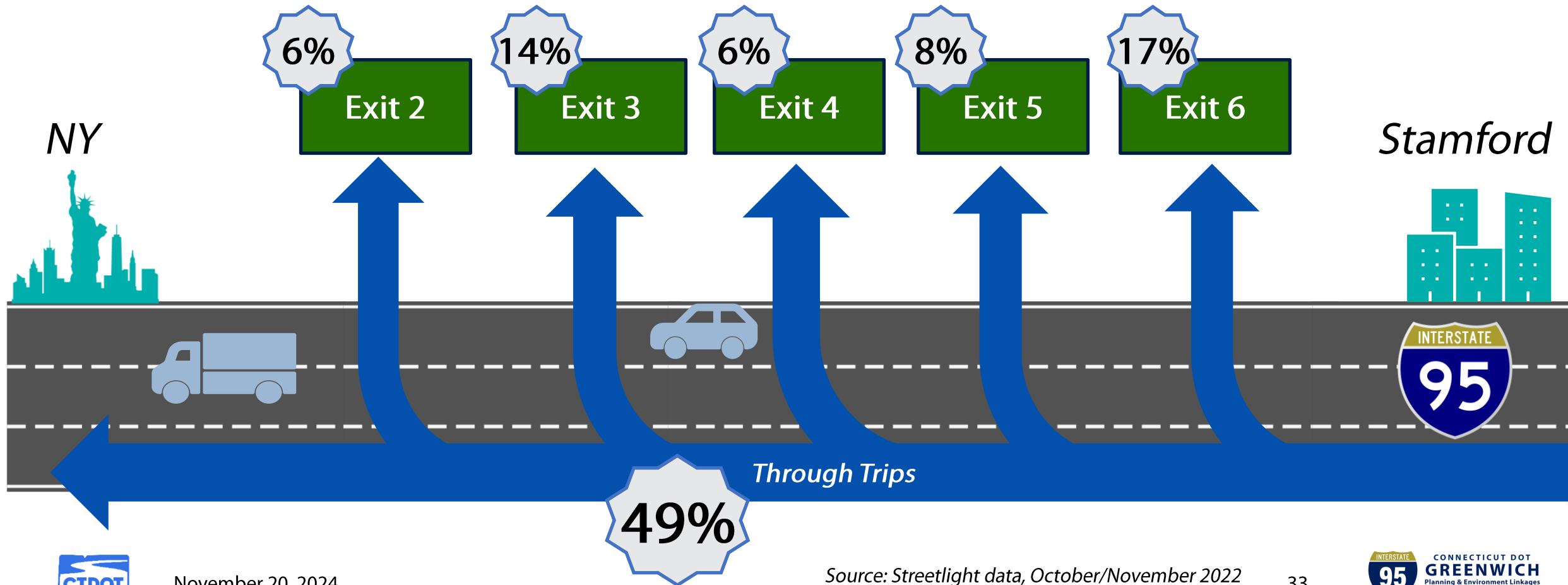
I-95: 145,000/weekday
U.S. Route 1: 17,000/day



Where are People Headed?



Southbound
AM Weekday Peak Period



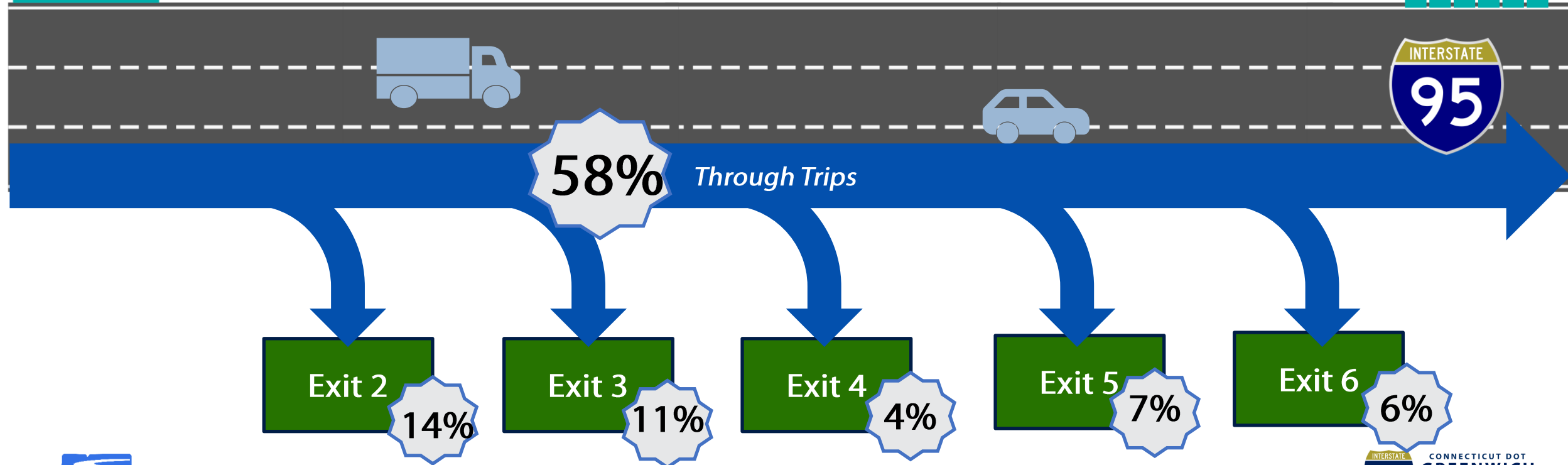
Where are People Headed?

NY



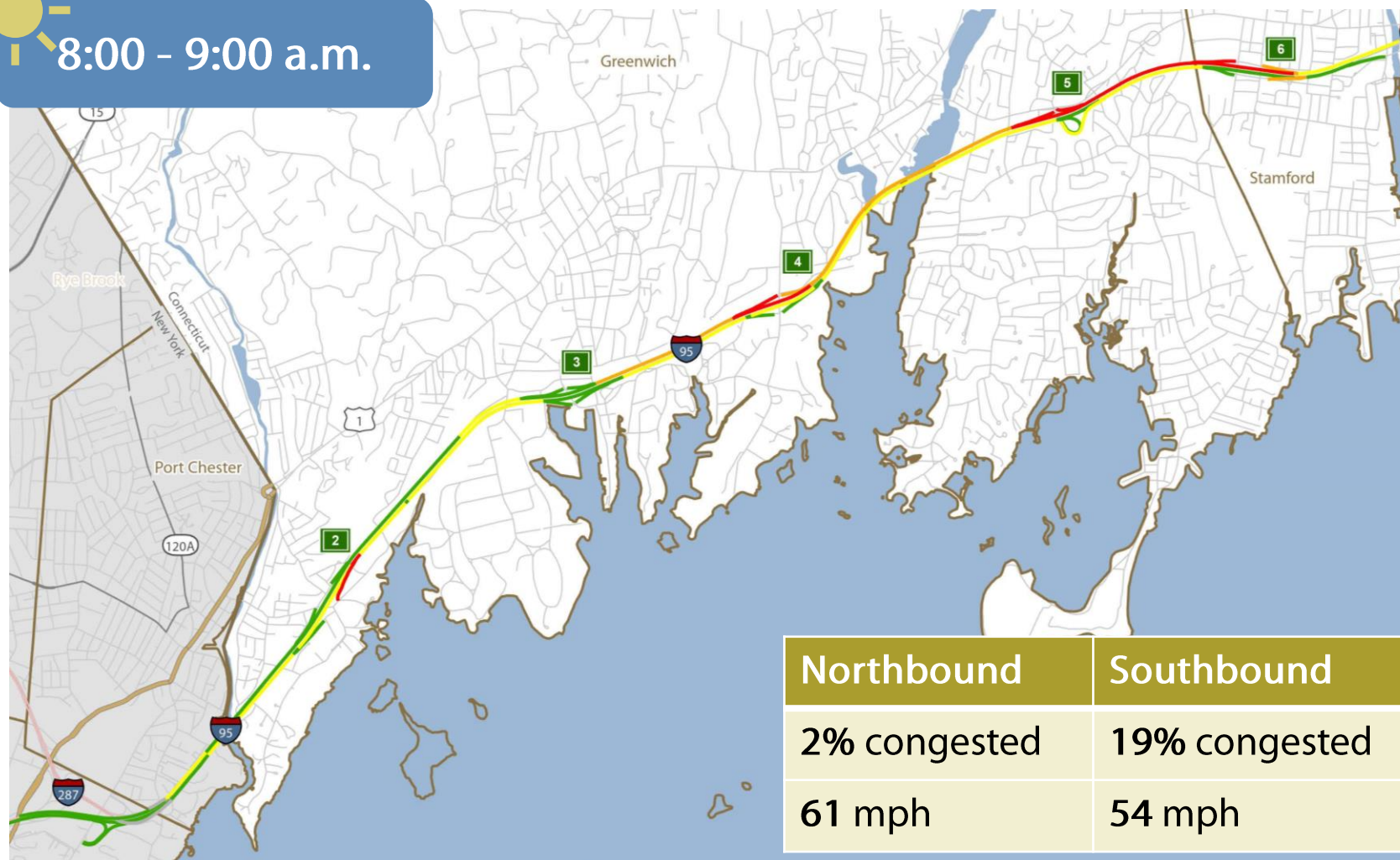
Northbound
PM Weekday Peak Period

Stamford

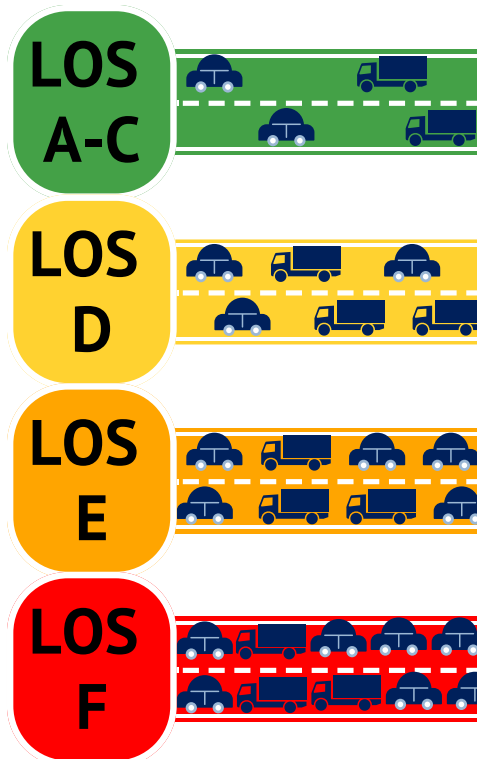


What is Traffic Like During the Week on I-95?

 8:00 – 9:00 a.m.

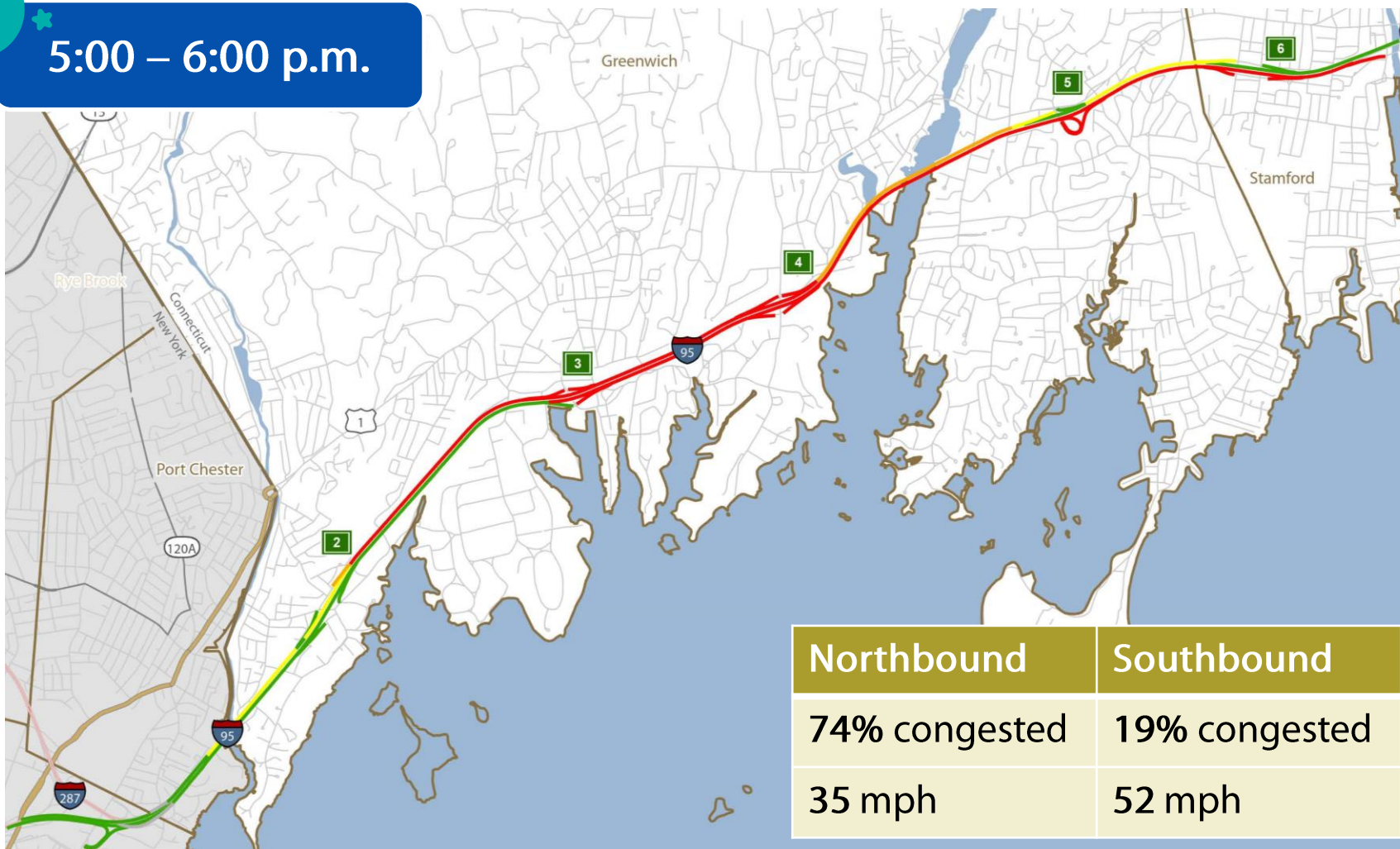


What is Level of Service (LOS)?



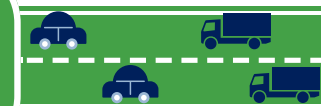
What is Traffic Like During the Week on I-95?

5:00 – 6:00 p.m.



What is Level of Service (LOS)?

LOS
A-C



LOS
D



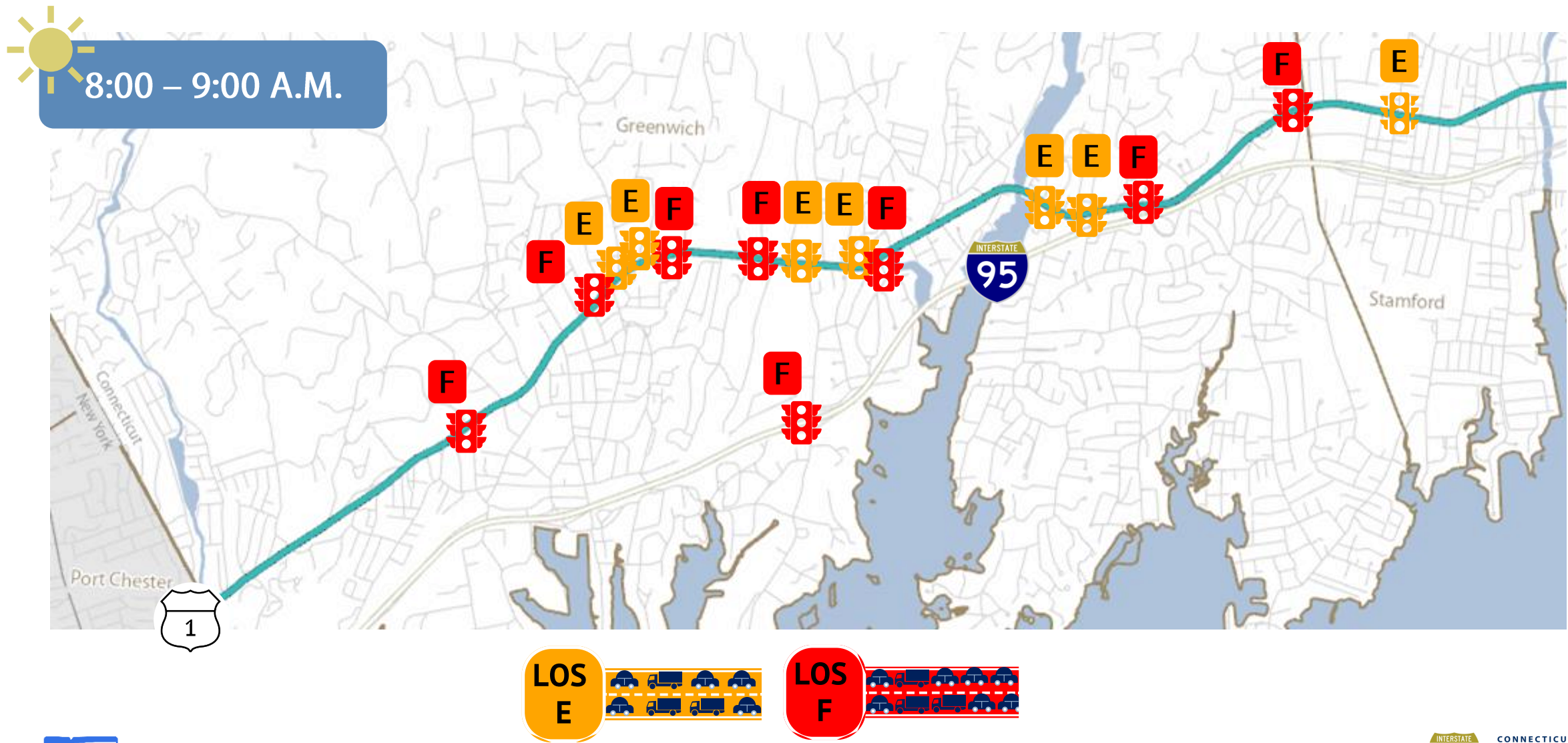
LOS
E



LOS
F

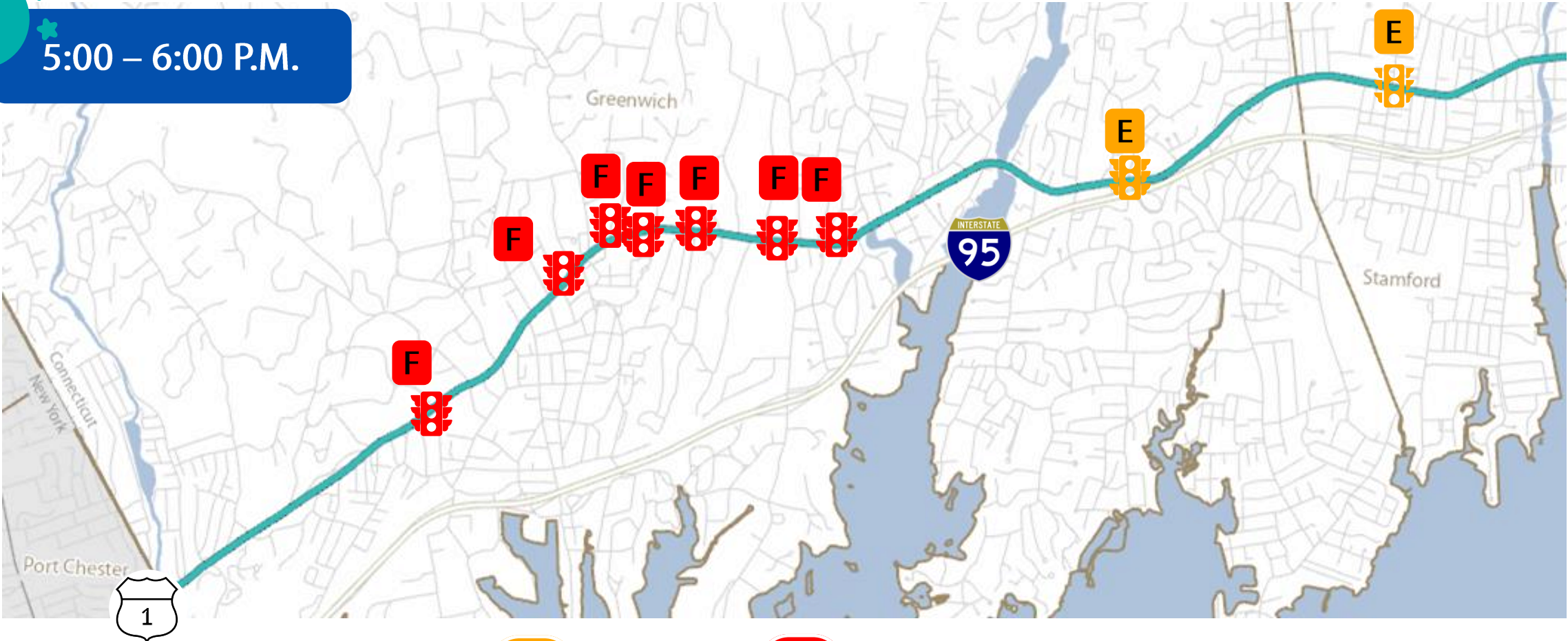


What is Traffic Like During the Week at Signalized Intersections?



What is Traffic Like During the Week at Signalized Intersections?

5:00 – 6:00 P.M.



1,522

crashes on I-95 NB Mainline & Ramps

+

1,317

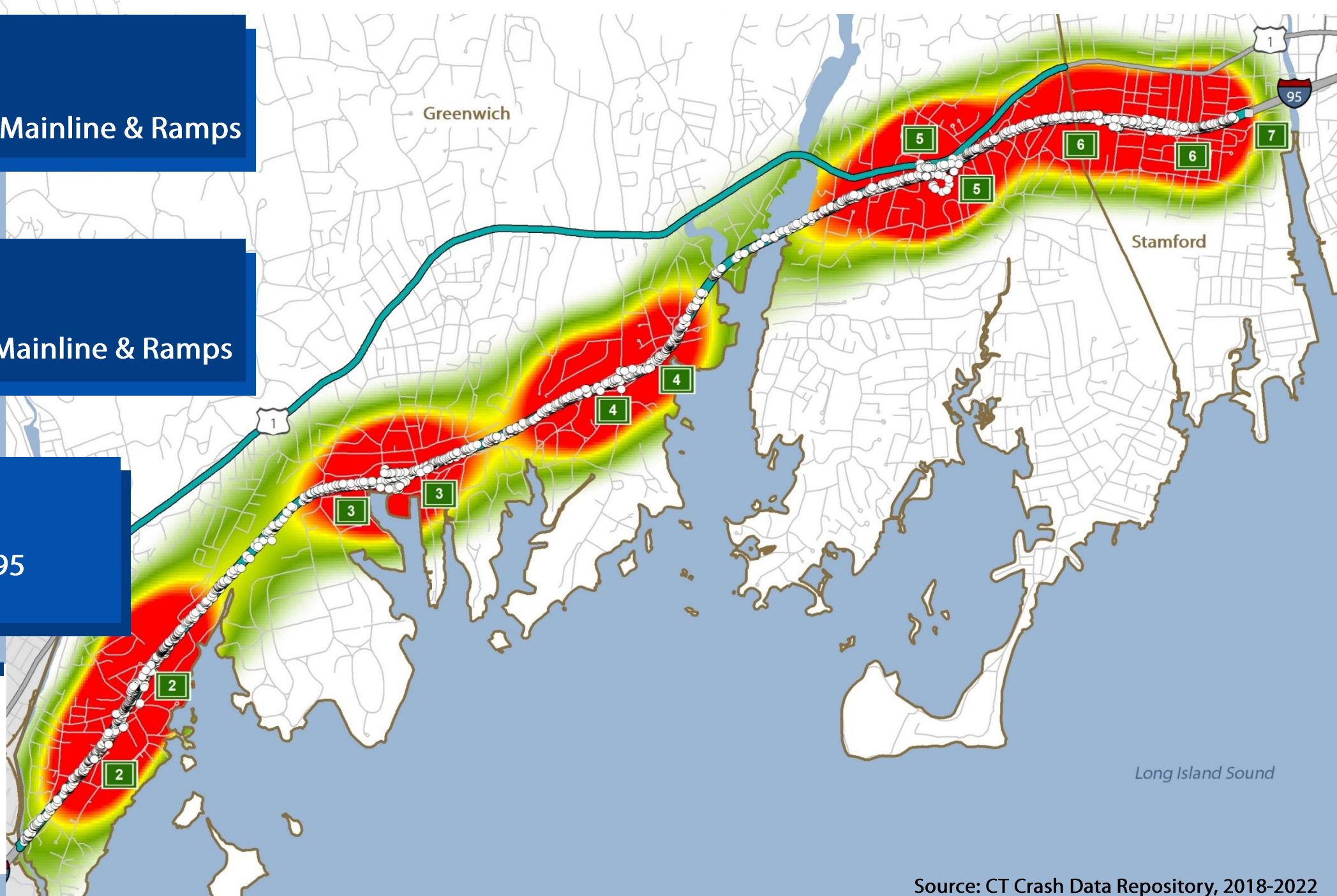
crashes on I-95 SB Mainline & Ramps

=

2,839

total crashes on I-95
Mainline & Ramps

Overall I-95
Crashes
2018-2022



351

crashes at I-95 Ramp Intersections

+

560

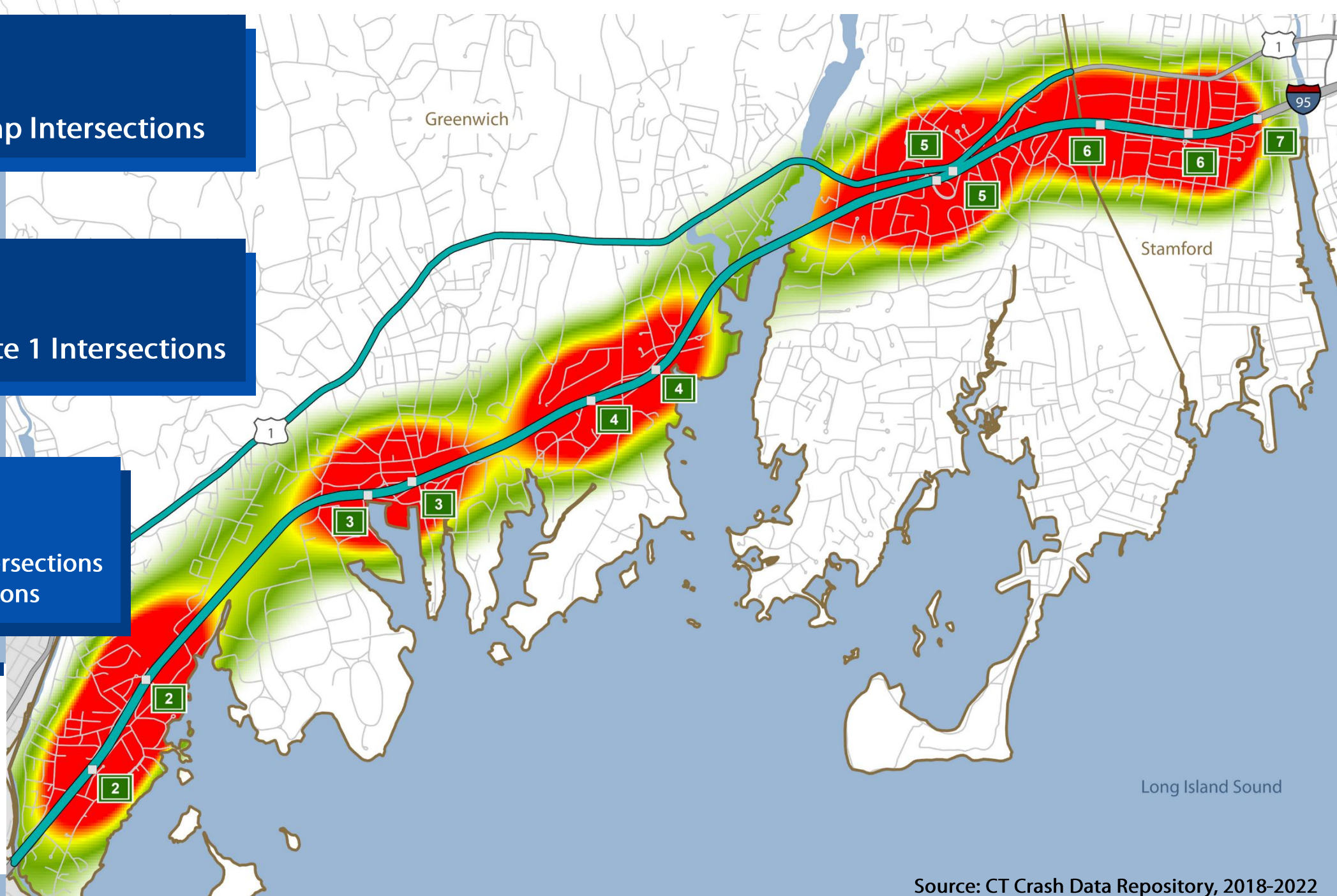
crashes at U.S. Route 1 Intersections

=

911

total crashes at I-95 Intersections
& U.S. Route 1 Intersections

Overall
Intersection
Crashes
2018-2022




What types of crashes are happening?

I-95 Mainline & Ramps

 Rear End 1,820

 Sideswipe 587

 Fixed Object 225

 Wrong way 3

 Pedestrian 1

I-95 Ramp Intersections

 Angle 165


 Rear End 98

 Sideswipe 51

 Pedestrian 2

 Wrong way 1

U.S. Route 1

 Angle 228

 Rear End 218

 Sideswipe 60

 Bike 2

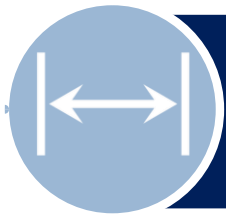
 Pedestrian 18

Source: CT Crash Data Repository, 2018-2022

Design Considerations



What condition are roads and bridges in?



63%
Shoulders are
NOT wide enough



I-95 Southbound, Exit 3



81%
Bridges are
NOT wide enough



Bridge over South Water Street



32%
Bridges are
NOT high enough



James Street East over I-95



I-95 Northbound, between Exit 4 and Mianus River Bridge

34%
Vertical curves do **NOT** provide
sufficient stopping sight distance



I-95 Southbound, Exit 4

75%
On-ramps are
NOT long enough



I-95 Northbound, Exit 4

73%
Off-ramps are
NOT long enough



Intersection Needs & Deficiencies

Travel Lane & Shoulder Widths

Auxiliary Lane & Shoulder Widths

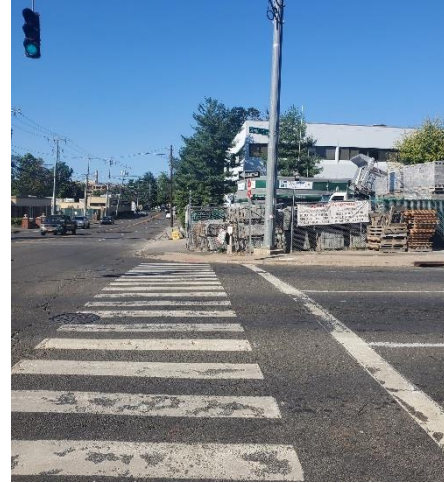
Accessibility Requirements (ADA)

Roadside Clear Zones

Intersections Sight Distance

Pedestrian and Bicyclist Facilities

Transit Provisions (Amenities)



Grenhart Rd & Harvard Ave, near Exit 6



U.S. Route 1 at Brookside Dr



Railroad Ave, near I-95 Exit 3



*U.S. Route 1 at Maple Ave &
Milbank Ave*

Multimodal Conditions



Pedestrian Issues on U.S. Route 1

13

Signalized crossings **without** crosswalks for each section



1+

Mile of sidewalk continuity issues



26

Side street crossings **without** crosswalks



Asphalt sidewalk along U.S. Route 1

Bicyclist Issues on U.S. Route 1



No designated bicycle lanes



Only 3 cross streets with bike lanes

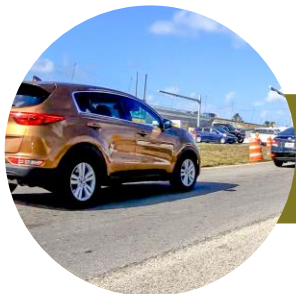


Worn and deteriorated shared lane markings



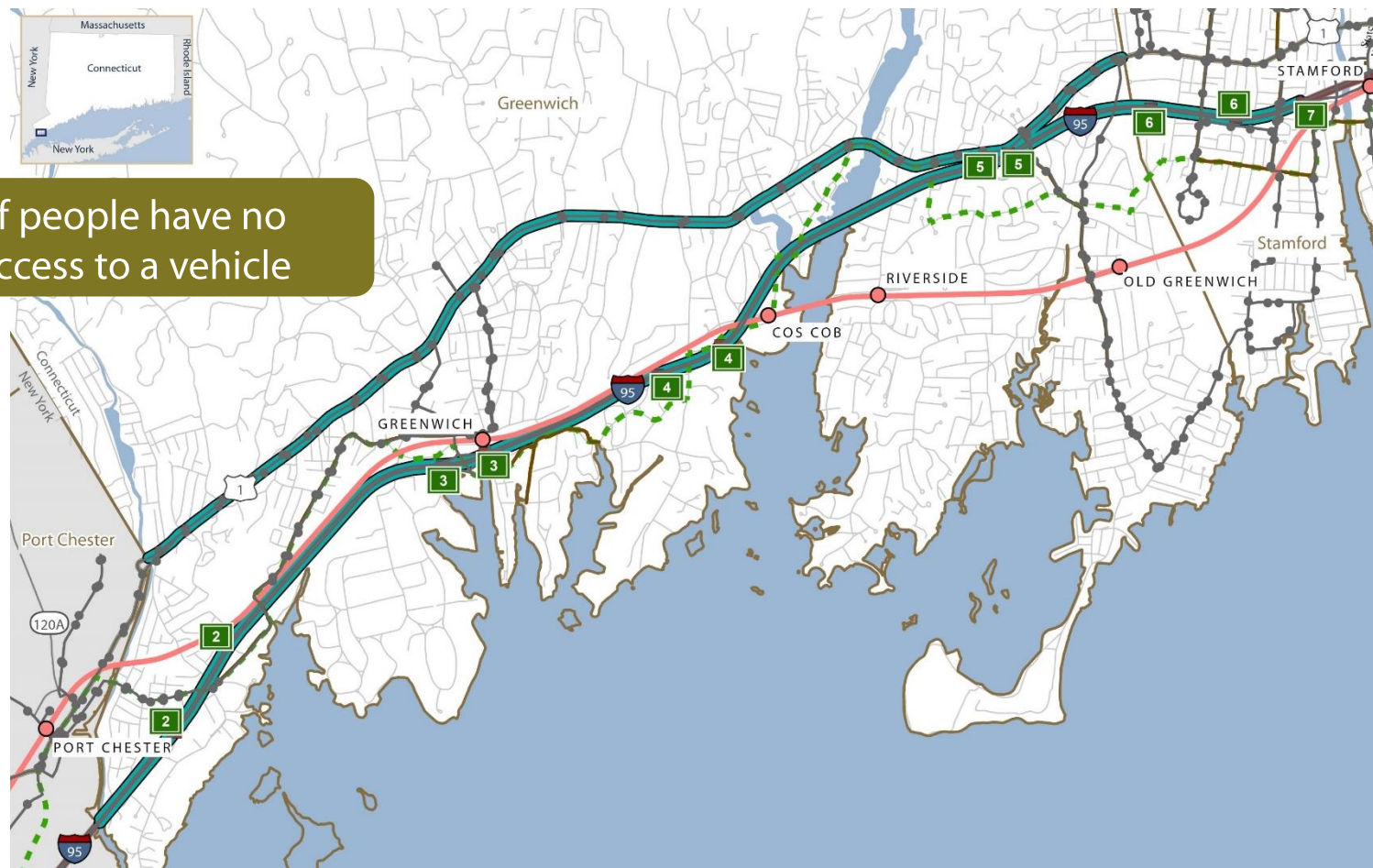
Worn shared lane marking along West Avenue

What Public Transportation is Available?



4.3% of people have no access to a vehicle

-  Rail Stops
-  Metro-North New Haven Line
-  Bus Stops
-  Bus Routes
-  East Coast Greenway

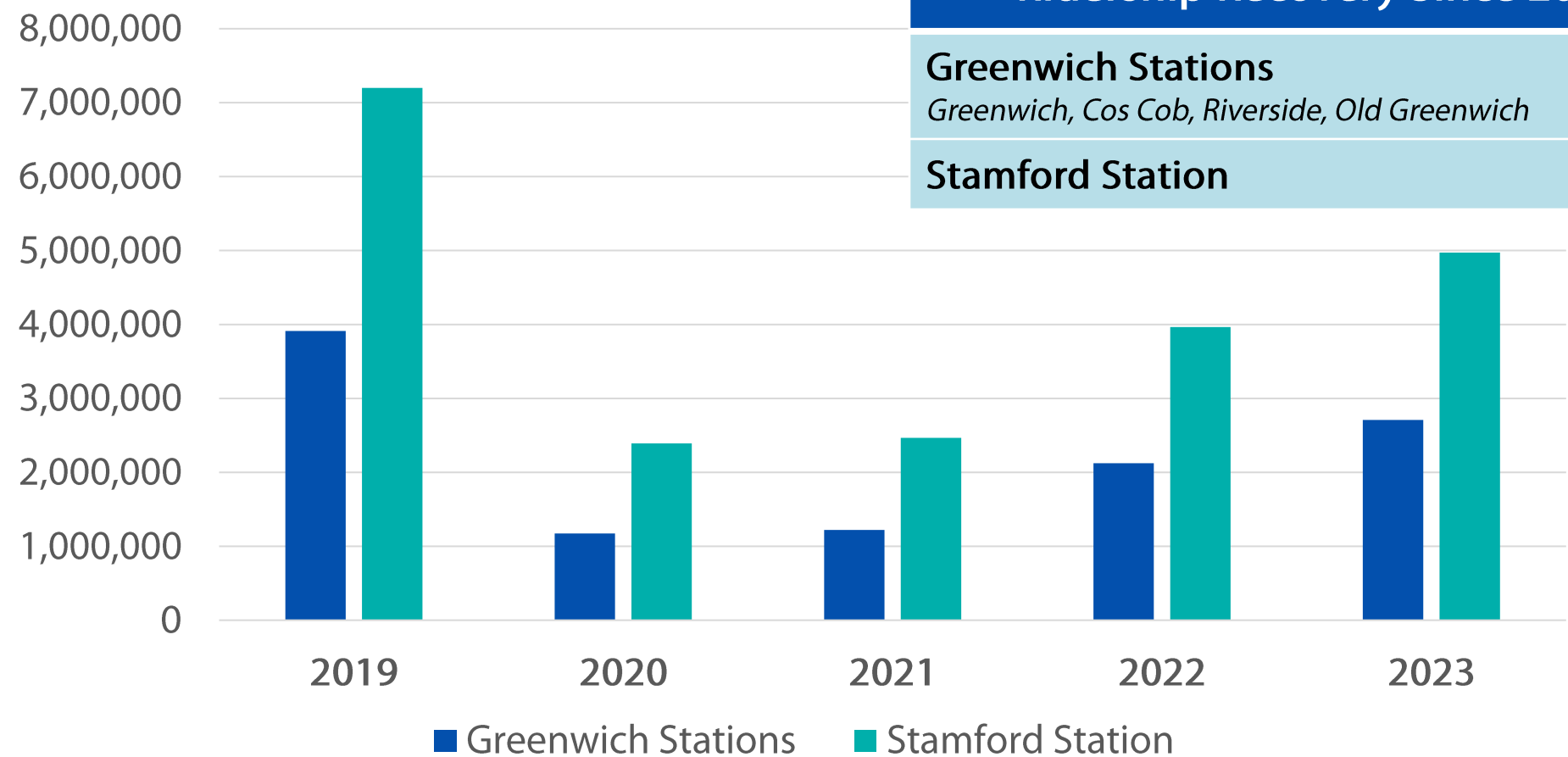


Bus Ridership 2020-2023

Bus Route	2020	2021	2022	2023	Percent Change (2020-2023)
I-Bus Express 97	23,900	17,100	28,500	47,700	99%
311 Port Chester	609,200	334,000	477,600	498,800	-18%
312 West Main St	15,600	17,900	22,300	22,000	41%
313 West Broad St	81,300	85,100	149,900	150,700	85%
324 Fairfield Ave	49,400	56,200	94,300	98,400	99%
Greenwich Central Loop Commuter Shuttle	3,300	2,600	5,900	4,300	32%



Rail Ridership 2019-2023



Ridership Recovery Since 2019	
Greenwich Stations <i>Greenwich, Cos Cob, Riverside, Old Greenwich</i>	67%
Stamford Station	69%

Environmental Conditions



Environmental Resources in the Study Area



216

Historic properties



18

Communities with
Environmental Justice concerns



2

Cemeteries



15

Public parks and open space

32

Streams, lakes, ponds,
reservoirs, and harbors

3

Areas known to have
protected species

1,063

Acres of overlap with
the coastal zone

309

Acres of floodplains
and floodways

149

Acres of
wetlands



November 20, 2024

Sources: CT DEEP Open GIS; EPA EJScreen; National Register of Historic Places Database; National Wetlands Inventory; ConnCRIS

Noise Study Process

During I-95 Greenwich PEL Study

Future Steps if Type I* Projects are Initiated After PEL Study During Federal Environmental Review Process

Existing Noise Conditions

Identify existing noise levels



Validate Traffic Noise Model



Identify Predicted Noise Impacts



Consider Noise Abatement Measures

Evaluates if abatement
is reasonable & feasible



** **Type I projects** include construction of a new highway, additional traffic lane(s), or projects that result in a substantial alteration of the horizontal or vertical alignment (in accordance with **CTDOT Noise Policy**)*

Existing Conditions Noise Results



1,598 residences within 500 feet of I-95 have been analyzed for noise

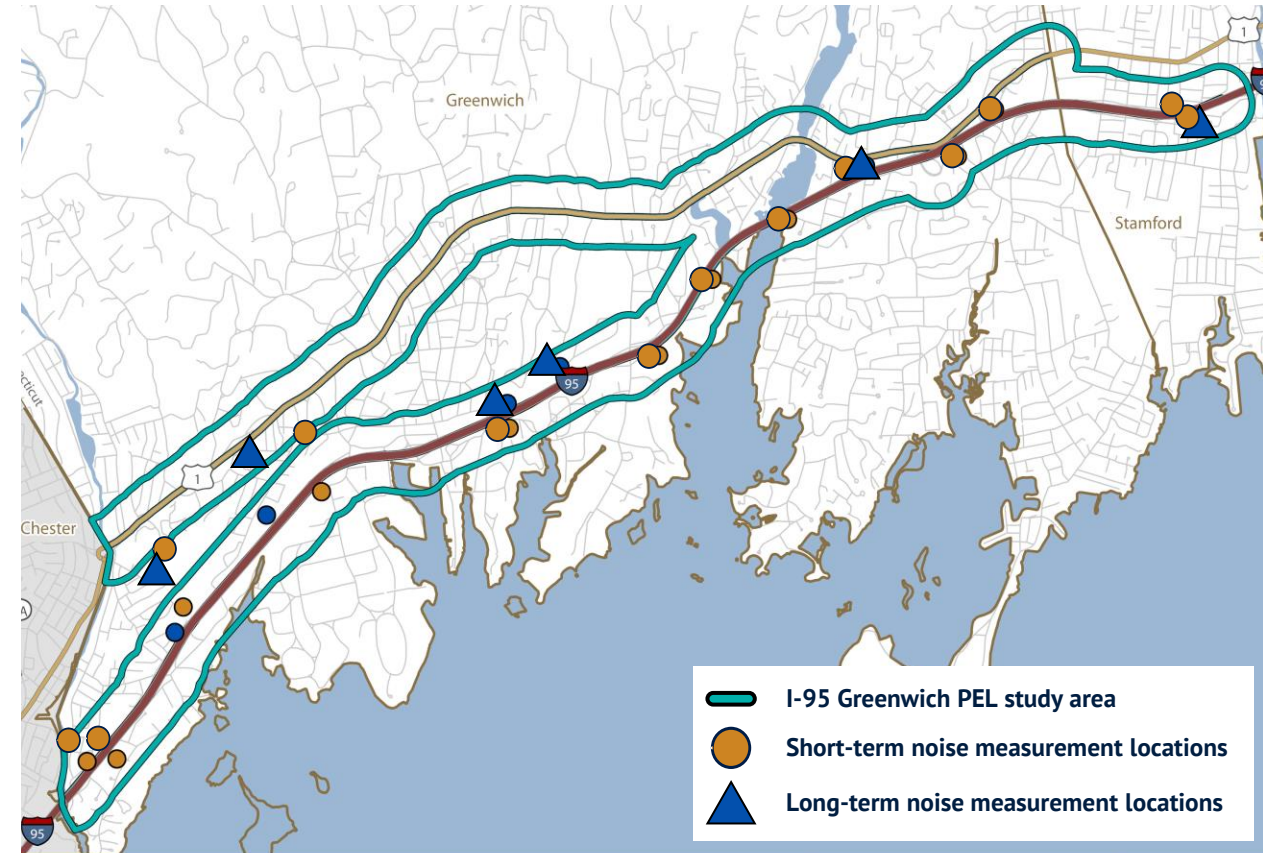


759 of those residences are predicted to experience noise levels that approach*, meet, or exceed the NAC**



47% of all residences analyzed are predicted to experience noise levels that approach*, meet, or exceed the NAC**

NOISE MONITORING LOCATIONS





Draft Study Vision & Goals

How do we develop the vision & goals?

Engage



the community through the Project Advisory Committee, stakeholder meetings, website, & pop-up events

Review



local plans & prior studies

Analyze



transportation, land use, socio-economic, environmental, cultural, noise, environmental justice

What is the study's vision?

The I-95 and U.S. Route 1 corridors will serve local, regional, & statewide travelers by balancing mobility & access considerations in a way that:



Enhances
safety for all
users



Provides
multimodal &
equitable
transportation
solutions



Improves the
reliability &
resiliency of the
transportation
system



Reflects
the community's
character
& needs

What are the study goals?

Multimodal Options

Improve bicycle, pedestrian, and transit facilities and connections.

Quality of Life

Enhance livability, while considering the effects on noise and air quality.

Mobility

Enhance the movement of people and goods, including transportation reliability and accessibility.

Equity in Transportation

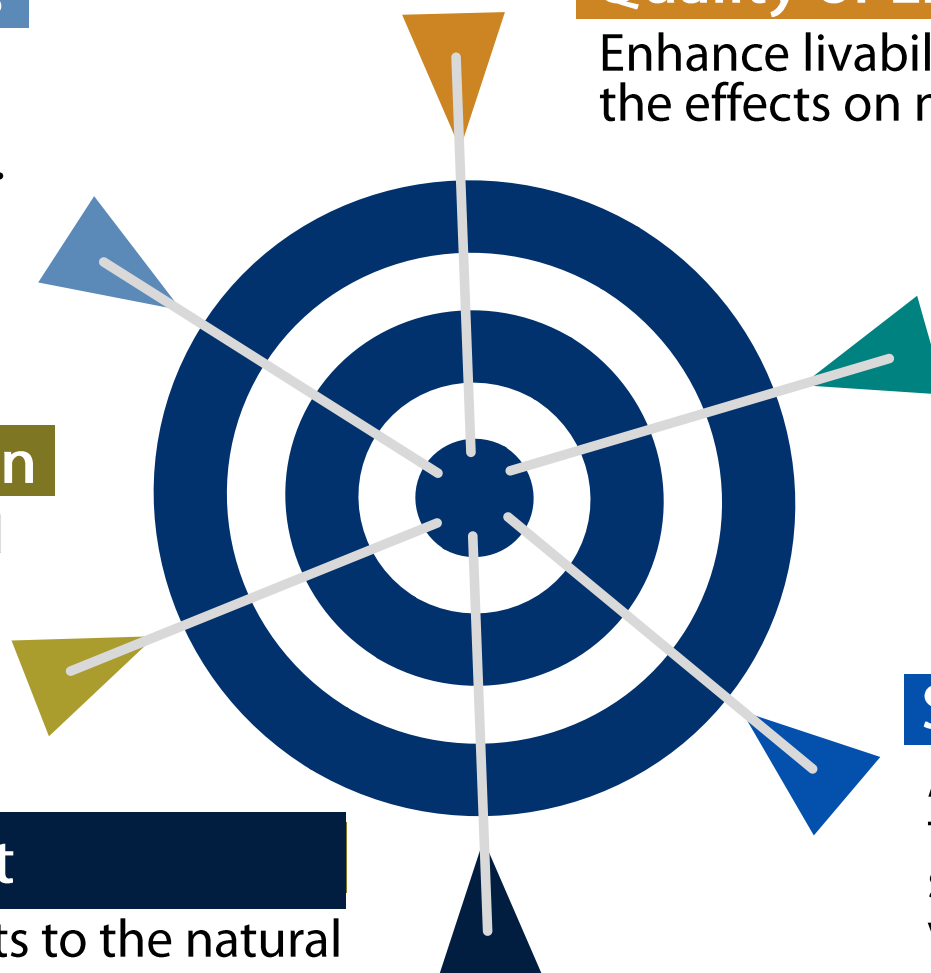
Provide equitable access and mobility for all users.

Environment

Minimize impacts to the natural and built environments.

Strategic Alignment

Align with regional and statewide transportation planning goals and strategies to improve economic vitality, accessibility, and mode choice.





Draft Preliminary Purpose & Need

What is a Purpose and Need Statement?

It's the WHY?

Tells *why* the study is being conducted

Expresses the transportation *issues and problems*

Is the *foundation* of the PEL decision-making process and future project design

Draft Preliminary Purpose & Need

The purpose of transportation improvements along I-95 and U.S. Route 1 is to **increase regional mobility, multimodal access, and **safety**** for the movement of people and goods.

NEEDS FOR IMPROVEMENT



Operational
Deficiencies



Design
Deficiencies

Draft Preliminary Needs for I-95



OPERATIONAL DEFICIENCIES



Travel delay:
interchange spacing, traffic volume, ramp lengths, lane use



Safety/crashes:
rear end, sideswipe, fixed object



Congestion:
volume to capacity and density



DESIGN DEFICIENCIES



Insufficient acceleration and deceleration ramp lengths



Substandard stopping sight distance



Substandard shoulder widths and clear zone obstructions



Substandard bridge lane width



Substandard bridge vertical clearance

Draft Preliminary Needs for U.S. Route 1



OPERATIONAL DEFICIENCIES



Travel delay:
signalized intersections, traffic volume,
turn lanes



Safety/crashes:
angle, rear end, sideswipe



Substandard pedestrian facilities:
continuity, ramps, crosswalks,
signals, lighting



Substandard bicycle facilities:
lack of facilities



Substandard transit provisions:
bus stops, ADA compliance,
crosswalks, seating, lighting



DESIGN DEFICIENCIES



Insufficient signalized crossings



**Sidewalk and crosswalk
continuity issues**



**Insufficient bus stop
amenities**



Lack of bicycle infrastructure

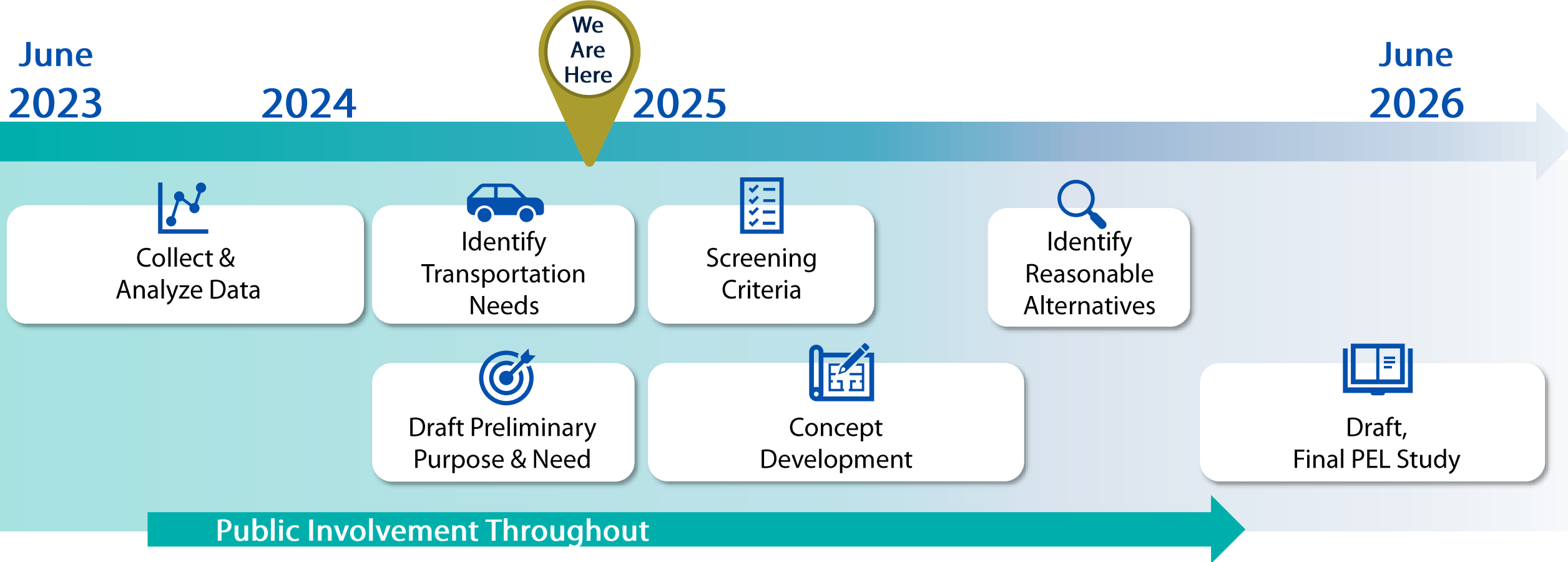


**Deteriorated and worn bicycle
lane markings and signage**



Schedule & Next Steps

Study Schedule





How to Engage

Have Your Voice Be Heard!



www.i95Greenwich.com



info@i95Greenwich.com



101 East River Drive, Suite 1A
East Hartford, CT 06108



(203) 806-0804



On Zoom: Q&A



November 20, 2024

*Zoom Q&A is only available during live Q&A session

Submit your comments
through December 6, 2024!



Scan to take our survey!



Stay Engaged!



Follow along on social media

@i95Greenwich



Sign up for email updates

www.i95Greenwich.com/get-engaged



Save the Date!

Next Public Meeting 2025



Questions & Answer Session

Let's have a productive, friendly, & efficient meeting.



Respectful
language &
professional
meeting
behavior



Manual
unmuting by
facilitator



Similar
questions may
be grouped



Recording
available
online

How to Use Zoom Q&A

Q&A

Submit a question through the Q&A tool. We will group similar questions and answer questions aloud.

Audio settings ^



Chat



Raise hand



Q&A



Show captions



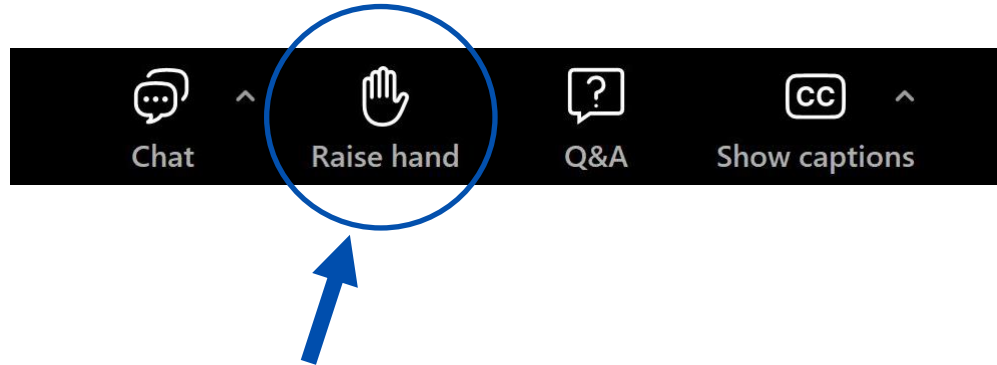
Leave



Raise your hand to verbally ask a question. We will unmute you after we have taken all written questions.

Having technical issues? Email us at info@i95Greenwich.com or call/text at **203-806-0804**.

How to Ask a Question Verbally



Click 'Raise Hand' to verbally ask a question (or *9 for phone-only participants).



Please state and spell your **full name** when you begin.



We will **unmute** you after we have taken all written questions.



Please limit comments to **5 minutes**.



Questions & Answer Session

Thank you!

